



HOLLY PARK NEWSLETTER

'We support our children to be their best.'

ISSUE 11

Thursday 21st November 2024

www.hollyparkschool.co.uk

Local Charity Day

Thank you to all of our children and families who supported Noah's Ark this week. We had an assembly from Noah's Ark Children's Hospice all about the work they do for very sick children. The costumes looked amazing. Thank you for the £1 contributions online which will be sent to Noah's Ark to support their continued work for local children and families. Even Poppy the school dog dressed up!



Reading Volunteers

We are hoping to recruit adult volunteers (parents, carers, aunts, grandparents, etc) to read with some of our children, once a week. If this is something you (or another family member) are interested in then please join us for coffee and biscuits: Friday 5th December 8.50-9.30am in The Enchanted Forest with Miss Sampson and Mrs Walton.

No experience required—we will provide training. This will be a unique opportunity for you to help the school whilst developing your own skills in supporting young readers. ALL ARE WELCOME!

Lucy Connor Pupil Support Officer

We are delighted to have appointed Miss Lucy Connor as our new Pupil Support Officer. Miss Connor has been a midwife. She has also been in charge of welfare, medical and pastoral care for children boarding at a school. She is currently an exams officer in a school. Miss Connor lives locally and has teenage children. She will begin her new role at Holly Park on Monday 16th December.



Chess Competition

The Holly Park chess team took part last weekend in the North London Schools Chess League - formerly the Barnet Schools Chess league. There were three rounds of chess for each school to compete in. The competition was fierce. The children all played brilliantly and we are currently in 8th place out of 20 teams. The children have really improved since starting chess club. Considering they have only just started competing, their coach is very impressed and proud of the children! Well done to all six team members: Ansh, Arthary, Bennie, Franco, Krish and Leo. There are two further chess competition meetings in January and in March. Good luck for Stage Two of the competition in 2025!



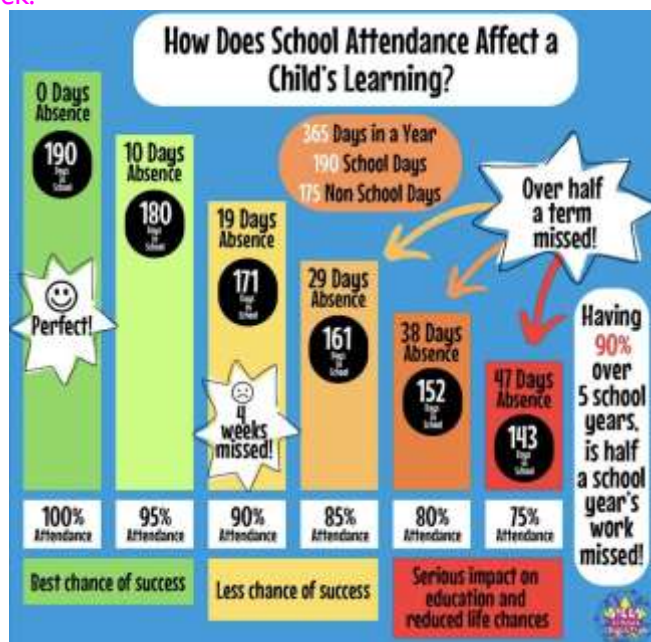
Attendance Is Part Of Safeguarding

A reminder that the new statutory safeguarding and child protection guidance for schools in England has been updated with the decision that being absent from education can be a warning sign of a range of safeguarding concerns, including sexual abuse, sexual exploitation or child criminal exploitation.

Children who are absent from education refers to children who are registered pupils at a school but not attending regularly. This includes persistently absent pupils (who are absent 10 percent or more of the time from school) or severely absent pupils (who are absent 50 percent or more of the time).

Schools are required to put in place appropriate safeguarding responses for pupils who become absent from education, particularly on repeat occasions and/or for prolonged periods. Children with attendance of 90% or less will potentially need to be referred to the Barnet Educational Welfare Officer.

As we have now completed the first half term, we have held an attendance and safeguarding meeting this week and have looked at the attendance of pupils across the school with attendance below 90%. I will be contacting the parents of these children in the next week.



Inset Day

A reminder that tomorrow (Friday 22nd November) is an INSET DAY and the school is closed for staff training.

Attendance

Whole school attendance for last week was 95%

Well done to Y3 Hazel Class with the best attendance at 100%.

Dates

Tuesday 26 th November	Mulberry Class assembly at 9am
Wednesday 27 th November	Meeting for parents Y1-Y3: Reading
Monday 2 nd December	Meeting for all parents: Learning
Monday 2 nd December	Decorations Day
Wednesday 4 th December	Reading meeting for Reception parents
Friday 6 th December	Jazzy Jumper Day
Saturday 7 th December	PTA Christmas fair

Tuesday 10 th December	Y1 Church Visit
Tuesday 10 th December	Nursery stay and play
Wednesday 11 th December	Christmas Lunch
Thursday 12 th December	Nativity Dress Rehearsal
Monday 16 th December	Y3 Nativity at 2.15pm
Tuesday 17 th December	EYFS parties
Tuesday 17 th December	Y3 Nativity at 2.15pm
Wednesday 18 th December	Y3 & Y5 parties
Thursday 19 th December	Y1, Y2, Y4 & Y6 parties
Friday 20 th December	Term ends at 1.30pm

There is facility to translate this newsletter and the whole school website at the bottom of the website home page.





Reading Volunteers Needed!

We are hoping to recruit adult volunteers (parents, carers, aunts, grandparents, etc) to read with some of our children, once a week. If this is something you (or another family member) are interested in then please join us for coffee and biscuits:

Friday 6th December
8.50-9.30am

in

The Enchanted Forest

No experience required—we will provide training.

This will be a unique opportunity for you to help the school whilst developing your own skills in supporting young readers.

ALL ARE WELCOME!

In the meantime, if you have any questions then please contact Ms Sampson or Mrs Walton via the office email: office@hollypark.barnetmail.net