



Holly Park School Child Protection & Safeguarding Policy (2024/25)

Designated Safeguarding Lead	Maria Michael (Deputy Head)
Deputy Designated Lead	Ann Pelham (Headteacher)
Deputy Designated Lead	Eve Mehtar (AHT)
Deputy Designated Lead	Emily Sampson (AHT)
Deputy Designated Lead	Diana Kelly (Children's Co-ordinator)
Deputy Designated Lead	Kathy Puzey (Learning Mentor)
Deputy Designated Lead	Sarah Walton (EYFS Lead Practitioner)
Deputy Designated Lead	Andrea Needham (Pupil Support Officer)
Safeguarding Team	Sally Thomas (DSL for LAC)

** All of the above have completed the appropriate DSL training*

HPS Governor for Safeguarding	Jane Morris
HPS Online Safety Co-ordinators	Lewis Turner & Dominic Carini
HPS PREVENT DUTY Contact	Ann Pelham (Headteacher)
HPS Named Governor for Looked After Children	Jane Morris
Chair of Barnet Safeguarding Partnership	Andrew Fraser
Barnet Safeguarding Officer	Liam foote 02083594997 Liam.foote@barnet.gov.uk
Barnet LADO	Rob Wratten 0208 359 5117 07801992592 lado@barnet.gov.uk
Barnet PREVENT Coordinator	Perryn Jasper 020 8359 7371 perryn.jasper@barnet.gov.uk
Barnet PREVENT Office	Ameilcah Clarke 020 8359 7371 07856 002 586
DPO	Turn It On darrenevett@turniton.co.uk

***This policy has been updated in response to the release of KCSIE 2024.**

Contents

Statement of intent

Acronyms

Definitions

1. Safeguarding Ethos at Holly Park
2. Specific Holly Park approaches to safeguarding
3. Legal framework
4. Roles and responsibilities
5. Multi-agency working
6. Early help
7. Abuse, neglect and exploitation
8. Specific safeguarding issues
9. Child-on-child abuse
10. Online safety and personal electronic devices
11. Consensual and non-consensual sharing of indecent images and videos
12. Context of safeguarding incidents
13. Pupils potentially at greater risk of harm
14. Use of the school premises for non-school activities
15. Alternative provision
16. Work experience
17. Homestay exchange visits
18. Concerns about pupils
19. Managing referrals
20. Concerns about school safeguarding practices
21. Safeguarding concerns and allegations of abuse against staff
22. Communication and confidentiality
23. Safer recruitment
24. Single central record (SCR)
25. Training
26. Links with the Rights of the Child
27. Monitoring and review

Appendices

- A. Specific safeguarding issues
- B. Holly Park Reporting concerns flow chart
- C. Holly Park Supervision Record sheet
- D. Holly Park Staff Low Level Concern record sheet
- E. Holly Park on duty DSL rota

Statement of intent

Holly Park is committed to safeguarding and promoting the physical, mental and emotional welfare of every pupil, both inside and outside of the school premises. We implement a whole-school preventative approach to managing safeguarding concerns, ensuring that the wellbeing of pupils is at the forefront of all action taken.

This policy sets out a clear and consistent framework for delivering this promise, in line with safeguarding legislation and statutory guidance. It will be achieved by:

- Ensuring that members of the governing board, the headteacher and staff understand their responsibilities under safeguarding legislation and statutory guidance, are alert to the signs of child abuse, and know to refer concerns to the DSL.
- Teaching pupils how to keep safe and recognise behaviour that is unacceptable.
- Identifying and making provision for any pupil that has been subject to, or is at risk of, abuse, neglect, or exploitation.
- Creating a culture of safer recruitment by adopting procedures that help deter, reject or identify people who might pose a risk to children.
- Ensuring that the headteacher and any new staff and volunteers are only appointed when all the appropriate checks have been satisfactorily completed.

The DSL is Maria Michael. In the absence of the DSL, child protection matters will be dealt with by any of the deputy DSLs:

Ann Pelham
Kathy Puzey
Andrea Needham
Diana Kelly
Emily Sampson
Eve Mehtar
Sarah Walton

Acronyms

This policy contains a number of acronyms used in the Education sector. These acronyms are listed below alongside their descriptions.

Acronym	Long form	Description
CCE	Child criminal exploitation	A form of abuse where an individual or group takes advantage of an imbalance of power to coerce, manipulate or deceive a child into taking part in criminal activity in exchange for something the victim needs or wants, for the financial advantage or other advantage of the perpetrator or facilitator, and/or through violence or the threat of violence.
MASH	Multi agency safeguarding hub	The single point of contact for all professionals to report safeguarding concerns.
CSE	Child sexual exploitation	A form of sexual abuse where an individual or group takes advantage of an imbalance of power to coerce, manipulate or deceive a child into sexual activity in exchange for something the victim needs or wants, for the financial advantage, increased status or other advantage of the perpetrator or facilitator, and/or through violence or the threat of violence.
DBS	Disclosure and Barring Service	The service that performs the statutory check of criminal records for anyone working or volunteering in a school.
DfE	Department for Education	The national government body with responsibility for children's services, policy and education, including early years, schools, higher and further education policy, apprenticeships and wider skills in England.
DPO	Data protection officer	The appointed person in school with responsibility for overseeing data protection strategy and implementation to ensure compliance with the UK GDPR and Data Protection Act.
DSL	Designated safeguarding lead	A member of the senior leadership team who has lead responsibility for safeguarding and child protection throughout the school.
EEA	European Economic Area	The Member States of the European Union (EU) and three countries of the European Free Trade Association (EFTA) (Iceland, Liechtenstein and Norway; excluding Switzerland).

EHC plan	Education, health and care plan	A funded intervention plan which coordinates the educational, health and care needs for pupils who have significant needs that impact on their learning and access to education. The plan identifies any additional support needs or interventions and the intended impact they will have for the pupil.
ESFA	Education and Skills Funding Agency	An agency sponsored by the Department for Education with accountability for funding education and skills training for children, young people and adults.
FGM	Female genital mutilation	All procedures involving the partial or total removal of the external female genitalia or other injury to the female genital organs. FGM is illegal in the UK and a form of child abuse with long-lasting harmful consequences.
UK GDPR	UK General Data Protection Regulation	Legislative provision designed to strengthen the safety and security of all data held within an organisation and ensure that procedures relating to personal data are fair and consistent.
HBA	'Honour-based' abuse	So-called 'honour-based' abuse involves crimes that have been committed to defend the honour of the family and/or community.
HMCTS	HM Courts and Tribunals Service	HM Courts and Tribunals Service is responsible for the administration of criminal, civil and family courts and tribunals in England and Wales. HMCTS is an executive agency, sponsored by the Ministry of Justice.
IICSA	Independent Inquiry into Child Sexual Abuse	The Independent Inquiry into Child Sexual Abuse is analysing case files from the Disclosure and Barring Service to learn more about the behaviours of perpetrators who have sexually abused children in institutions, and to understand institutional responses to these behaviours.
KCSIE	Keeping children safe in education	Statutory guidance setting out schools and colleges' duties to safeguard and promote the welfare of children.
LA	Local authority	A local government agency responsible for the provision of a range of services in a specified local area, including education.
LAC	Looked-after children	Children who have been placed in local authority care or where children's services have looked after children for more than a period of 24 hours.

LGBTQ+	Lesbian, gay, bisexual, transgender and queer plus	Term relating to a community of people, protected by the Equality Act 2010, who identify as lesbian, gay, bisexual or transgender, or other protected sexual or gender identities.
NPCC	The National Police Chiefs' Council	The National Police Chiefs' Council is a national coordination body for law enforcement in the United Kingdom and the representative body for British police chief officers.
PLAC	Previously looked-after children	Children who were previously in local authority care or were looked after by children's services for more than a period of 24 hours. PLAC are also known as care leavers.
PSHE	Personal, social and health education	A non-statutory subject in which pupils learn about themselves, other people, rights, responsibilities and relationships.
RSHE	Relationships, sex and health education	A compulsory subject from Year 7 for all pupils. Includes the teaching of sexual health, reproduction and sexuality, as well as promoting positive relationships.
SCR	Single central record	A statutory secure record of recruitment and identity checks for all permanent and temporary staff, proprietors, contractors, external coaches and instructors, and volunteers who attend the school in a non-visitor capacity.
SENCO	Special educational needs coordinator	A statutory role within all schools maintaining oversight and coordinating the implementation of the school's special educational needs policy and provision of education to pupils with special educational needs.
SLT	Senior leadership team	Staff members who have been delegated leadership responsibilities in a school.
TRA	Teaching Regulation Agency	An executive agency of the DfE with responsibility for the regulation of the teaching profession.
VSH	Virtual school head	Virtual school heads are in charge of promoting the educational achievement of all the children looked after by the local authority they work for, and all children who currently have, or previously had, a social worker.

Definitions

The terms “**children**” and “**child**” refer to anyone under the age of 18.

For the purposes of this policy, “**safeguarding and protecting the welfare of children**” is defined as:

- Providing help and support to meet the needs of pupils as soon as problems emerge.
- Protecting pupils from maltreatment, whether that is within or outside the home, including online.
- Ensuring that pupils grow up in circumstances consistent with the provision of safe and effective care.
- Taking action to enable all pupils to have the best outcomes.

For the purposes of this policy, “**consent**” is defined as having the freedom and capacity to choose to engage in sexual activity. Consent may be given to one sort of sexual activity but not another, and can be withdrawn at any time during sexual activity and each time activity occurs. A person only consents to a sexual activity if they agree by choice to that activity, and has the freedom and capacity to make that choice. Children under the age of 13 can never consent to any sexual activity. The age of consent is 16.

For the purposes of this policy, “**sexual violence**” refers to the following offences as defined under the Sexual Offences Act 2003:

- **Rape:** A person (A) commits an offence of rape if they intentionally penetrate the vagina, anus or mouth of another person (B) with their penis, B does not consent to the penetration, and A does not reasonably believe that B consents.
- **Assault by penetration:** A person (A) commits an offence if they intentionally penetrate the vagina or anus of another person (B) with a part of their body or anything else, the penetration is sexual, B does not consent to the penetration, and A does not reasonably believe that B consents.
- **Sexual assault:** A person (A) commits an offence of sexual assault if they intentionally touch another person (B), the touching is sexual, B does not consent to the touching, and A does not reasonably believe that B consents.
- **Causing someone to engage in sexual activity without consent:** A person (A) commits an offence if they intentionally cause another person (B) to engage in an activity, the activity is sexual, B does not consent to engaging in the activity, and A does not reasonably believe that B consents. This could include forcing someone to strip, touch themselves sexually, or to engage in sexual activity with a third party.

For the purposes of this policy, “**sexual harassment**” refers to unwanted conduct of a sexual nature that occurs online or offline, inside or outside of school. Sexual harassment is likely to violate a pupil’s dignity, make them feel intimidated, degraded or humiliated, and create a hostile, offensive, or sexualised environment. If left unchallenged, sexual harassment can create an atmosphere that normalises inappropriate behaviour and may lead to sexual violence. Sexual harassment can include, but is not limited to:

- Sexual comments, such as sexual stories, lewd comments, sexual remarks about clothes and appearance, and sexualised name-calling.

- Sexual “jokes” and taunting.
- Physical behaviour, such as deliberately brushing against someone, interfering with someone’s clothes, and displaying images of a sexual nature.
- Online sexual harassment, which may be standalone or part of a wider pattern of sexual harassment and/or sexual violence. This includes:
 - The consensual and non-consensual sharing of nude and semi-nude images and/or videos.
 - Sharing unwanted explicit content.
 - Upskirting.
 - Sexualised online bullying.
 - Unwanted sexual comments and messages, including on social media.
 - Sexual exploitation, coercion, and threats.

For the purposes of this policy, “**upskirting**” refers to the act, as identified the Voyeurism (Offences) Act 2019, of taking a picture or video under another person’s clothing, without their knowledge or consent, with the intention of viewing that person’s genitals or buttocks, with or without clothing, to obtain sexual gratification, or cause the victim humiliation, distress or alarm. Upskirting is a criminal offence. Anyone, including pupils and staff, of any gender can be a victim of upskirting.

For the purposes of this policy, the “**consensual and non-consensual sharing of nude and semi-nude images and/or videos**”, colloquially known as “**sexting**”, is defined as the sharing between pupils of sexually explicit content, including indecent imagery. For the purposes of this policy, “**indecent imagery**” is defined as an image which meets one or more of the following criteria:

- Nude or semi-nude sexual posing
- A child touching themselves in a sexual way
- Any sexual activity involving a child
- Someone hurting a child sexually
- Sexual activity that involves animals

For the purposes of this policy, “**abuse**” is defined as a form of maltreatment of a child which involves inflicting harm or failing to act to prevent harm. Harm can include ill treatment that is not physical as well as the impact of witnessing the ill treatment of others – this can be particularly relevant, for example, in relation to the impact on children of all forms of domestic abuse. Children may be abused in a family, institutional or community setting by those known to them or by others, e.g. via the internet. Abuse can take place wholly online, or technology may be used to facilitate offline abuse. Children may be abused by one or multiple adults or other children.

For the purposes of this policy, “**physical abuse**” is defined as a form of abuse which may involve actions such as hitting, shaking, throwing, poisoning, burning or scalding, drowning, suffocating, or otherwise causing physical harm to a child. Physical abuse can also be caused when a parent fabricates the symptoms of, or deliberately induces, illness in a child.

For the purposes of this policy, “**emotional abuse**” is defined as the persistent emotional maltreatment of a child such as to cause severe and adverse effects on the child’s emotional development. This may involve conveying to a child that they are worthless, unloved,

inadequate, or valued only insofar as they meet the needs of another person. It may include not giving the child the opportunities to express their views, deliberately silencing them, 'making fun' of what they say or how they communicate. It may feature age- or developmentally inappropriate expectations being imposed on children, such as interactions that are beyond their developmental capability, overprotection and limitation of exploration and learning, or preventing the child from participating in normal social interaction. It may involve seeing or hearing the ill-treatment of another. It may involve serious bullying, including cyberbullying, causing the child to frequently feel frightened or in danger, or the exploitation or corruption of children. Some level of emotional abuse is involved in all types of maltreatment of a child, but it may also occur alone.

For the purposes of this policy, "**sexual abuse**" is defined as abuse that involves forcing or enticing a child to take part in sexual activities, not necessarily involving violence, and regardless of whether the child is aware of what is happening. This may involve physical contact, including assault by penetration, or non-penetrative acts, such as masturbation, kissing, rubbing, and touching outside of clothing. It may also include non-contact activities, such as involving children in looking at, or in the production of, sexual images, encouraging children to behave in sexually inappropriate ways, or grooming a child in preparation for abuse. Sexual abuse can be perpetrated by people of any gender and age.

For the purposes of this policy, "**neglect**" is defined as the persistent failure to meet a child's basic physical and/or psychological needs, likely to result in serious impairment of a child's health or development. This may involve a parent or carer failing to provide a child with adequate food, clothing or shelter (including exclusion from home or abandonment); failing to protect a child from physical or emotional harm or danger; failing to ensure adequate supervision (including through the use of inappropriate caregivers); or failing to ensure access to appropriate medical care or treatment. It may also include neglect of, or unresponsiveness to, a child's basic emotional needs.

1. Safeguarding Ethos at Holly Park

Holly Park is a community and all those directly connected (staff, governors, parents, families and pupils) have an essential role to play in making it safe and secure.

Holly Park is committed to safeguarding and promoting the physical, mental and emotional welfare of every pupil, both inside and outside of the school premises. We implement a whole-school preventative approach to managing safeguarding concerns, ensuring that the wellbeing of pupils is at the forefront of all action taken.

This policy sets out a clear and consistent framework for delivering this promise, in line with safeguarding legislation and statutory guidance. It will be achieved by:

- Ensuring that members of the governing body, the headteacher and staff understand their responsibilities under safeguarding legislation and statutory guidance, are alert to the signs of child abuse, and know to refer concerns to the DSL.
- Teaching pupils how to keep safe and recognise behaviour that is unacceptable.
- Identifying and making provision for any pupil that has been subject to, or is at risk of, abuse, neglect, or exploitation.
- Creating a culture of safer recruitment by adopting procedures that help deter, reject or identify people who might pose a risk to children.
- Ensuring that the Headteacher and any new staff and volunteers are only appointed when all the appropriate checks have been satisfactorily completed.

Our school core safeguarding principles are:

- It is a whole school responsibility to safeguard and promote the welfare of children as its paramount concern
 - All children (defined as those up to the age of 18) regardless of age, gender, ability, culture, race, language, religion or sexual identity, have equal rights to protection
 - All children have a right to be heard and to have their wishes and feelings taken into account
 - All staff understand safe professional practice and adhere to our code of conduct and other associated policies
- All staff have a responsibility to recognise vulnerability in children and act on any concern in accordance with this guidance

At Holly Park we recognise that safeguarding impacts on many aspects of school life:



2. Specific Holly Park approaches to safeguarding

We take great pride in encouraging all our children to feel part of, and to contribute positively to fundamental British values.

As a community school we are committed to the development of community cohesion and the prevention of extremism and radicalisation both within our school's physical boundaries and within our local, national and global environments. We are also committed to respond to community concerns or local disturbances in a positive way which supports British democratic society.

We aim to develop our policy and practice in line with current legislation and guidance but also in line with the experiences, training and expertise of our staff.

We recognise that the safeguarding of all children, staff, parents, visitors and volunteers should be a priority at all times. This will include steps taken to ensure the safety and protection of all members of the school community on a daily basis such as:

- Visits for all new starters across the school
- Registers taken at the start of the morning and afternoon sessions
- First day calling to establish the situation for absent pupils
- The requirement that children sign in if they arrive late or are being taken out of school early
- The wearing of identity lanyards by all staff
- The use of an entry system to monitor visitors to the site
- The requirement for all visitors to sign in and out of the school
- Maintaining a single central record
- Termly fire drills, lock down drills and emergency evacuation plans displayed in all rooms
- Regular premises tours by the site manager, Headteacher and Chair of the premises sub-committee to identify health and safety risks, trip hazards etc
- The management of the premises, including writing risk assessments eg for the pond area, play equipment, snow
- Risk assessments written and carried out prior to all trips
- Staff/pupil ratios adhered to especially on trips and visits
- Frequent head counts on trips
- Regular reminders about the use of the internet, social media, cameras etc. Staff are expected to sign forms yearly to accept safe use of technology including the prohibition of the use of mobile phones to take photos of children or used in directed hours. (see data security policy and acceptable use agreement)
- Parents sign permission forms on entry to the school – for such things as permission for the child's photo to be put on the website

- Acceptable use of technology charts are displayed in all classrooms and pupils are reminded of the computer rules. Pupils and parents sign a form.
- Anti-bullying is kept high profile including annual participation in National Anti-Bullying week
- Participation in National awareness campaigns – e.g Safer Internet day, World Peace day, National Road safety Week.
- We send out contact detail forms yearly for all pupils to ensure we have the most up to date contact and emergency contact information.
- Safer recruitment procedures followed with regard to employing staff and staff files maintained with DBS checks, proof of identity, references and qualifications.
- Individual behaviour plans and risk assessments for individuals as needed
- Food hygiene training for appropriate staff
- First aid and paediatric first aid training for appropriate staff
- We record accidents daily in an accident book. Accidents are analysed and reported to governors
- We keep records of behaviour including racist and homophobic behaviour and these are also analysed and reported to governors
- Health care plans as needed
- Staff training on asthma and the use of epi-pens
- The taking of medicines on trips
- Permission to administer medicine forms filled in before prescribed medicines are given

Pupils at Holly Park will be taught about safeguarding issues. Children will be regularly reminded about Safeguarding, especially online-safety and personal safety through a variety of curriculum opportunities eg PHSE, Police visits, Gang workshops, TFL workshops, transition to secondary school workshops and assemblies such as NSPCC & PANTS.

We have age appropriate child friendly child on child abuse policies displayed in classrooms

3. Legal framework

This policy has due regard to all relevant legislation and statutory guidance including, but not limited to, the following:

Legislation

- Children Act 1989
- Sexual Offences Act 2003
- Female Genital Mutilation Act 2003 (as inserted by the Serious Crime Act 2015)
- Children Act 2004
- Safeguarding Vulnerable Groups Act 2006
- Apprenticeships, Children and Learning Act 2009
- Equality Act 2010
- The Education (School Teachers' Appraisal) (England) Regulations 2012 (as amended)
- Anti-social Behaviour, Crime and Policing Act 2014

- Counter-Terrorism and Security Act 2015
- The UK General Data Protection Regulation (UK GDPR)
- Data Protection Act 2018
- The Childcare (Disqualification) and Childcare (Early Years Provision Free of Charge) (Extended Entitlement) (Amendment) Regulations 2018
- Voyeurism (Offences) Act 2019
- Domestic Abuse Act 2021
- Marriage and Civil Partnership (Minimum Age) Act 2022

Statutory guidance

- Home Office (2023) 'Prevent duty guidance: Guidance for specified authorities in England and Wales'
- DfE (2023) 'Working Together to Safeguard Children 2023'
- DfE (2018) 'Disqualification under the Childcare Act 2006'
- DfE (2024) 'Keeping children safe in education 2024'
- HM Government (2020) 'Multi-agency statutory guidance on female genital mutilation'
- HM Government (2023) 'Channel Duty Guidance: Protecting people susceptible to radicalisation'
- Home Office and Foreign, Commonwealth and Development Office (2023) 'Multi-agency statutory guidance for dealing with forced marriage and Multi-agency practice guidelines: Handling cases of forced marriage'

Non-statutory guidance

This policy operates in conjunction with the following school policies:

- Attendance Policy
- Child-on-child Abuse Policy
- Anti-bullying Policy
- Suspension and Exclusion Policy
- Online Safety Policy
- Data Protection Policy
- Photography & Video Policy
- Records Management Policy
- LAC Policy
- Whistleblowing Policy
- Safer Recruitment Policy
- Staff Code of Conduct
- SEND Policy
- Behaviour Policy
- First aid and medicines policy
- Health & safety policy
- Parent Code of Conduct
- Sex and relationship education policy
- Personal/intimate care policy
- Positive Handling policy

- Appraisal policy
- Staff Acceptable use policy

4. Roles and responsibilities

All staff have a responsibility to:

- Consider, at all times, what is in the best interests of the pupil.
- Maintain an attitude of 'it could happen here' where safeguarding is concerned.
- Provide a safe environment in which pupils can learn.
- Be prepared to identify pupils who may benefit from early help.
- Be aware of the school's systems which support safeguarding, including any policies, procedures, information and training provided upon induction.
- Be aware of the role and identity of the DSL and deputy DSLs.
- Undertake safeguarding training, including online safety training (which, amongst other things, includes an understanding of the expectations and responsibilities relating to filtering and monitoring), during their induction – this will be regularly updated.
- Receive and understand child protection and safeguarding (including online safety) updates, e.g. via email, as required, and at least annually.
- Be aware of the local early help process and understand their role in it.
- Be aware of, and understand, the process for making referrals to CSCS, as well as for making statutory assessments under the Children Act 1989 and their role in these assessments.
- Make a referral to CSCS and/or the police immediately, if at any point there is a risk of immediate serious harm to a child.
- Support social workers in making decisions about individual children, in collaboration with the DSL.
- Be aware of and understand the procedure to follow in the event that a child confides they are being abused, exploited or neglected.
- Be aware that a pupil may not feel ready or know how to tell someone that they are being abused, exploited or neglected, and/or may not recognise their experiences as harmful.
- Promote dialogue and understanding, and ensure all pupils feel listened to and understood.
- Empower pupils and allow them to understand their rights to safety and privacy, and to help them understand what they can do to keep themselves protected from harm.
- Avoid victim-blaming attitudes, and challenge it in a professional way if it occurs.
- Maintain appropriate levels of confidentiality when dealing with individual cases.
- Reassure victims that they are being taken seriously, that they will be supported, and that they will be kept safe.
- Speak to the DSL if they are unsure about how to handle safeguarding matters.
- Be aware of safeguarding issues that can put pupils at risk of harm.
- Be aware of behaviours that could potentially be a sign that a pupil may be at risk of harm.

Teachers, including the headteacher, have a responsibility to:

- Safeguard pupils' wellbeing and maintain public trust in the teaching profession as part of their professional duties, as outlined in the 'Teachers' Standards'.

- Personally report any cases to the police where it appears that an act of FGM has been carried out, also referred to as 'known' cases, as soon as possible.

The governing body has a duty to:

- Take strategic leadership responsibility for the school's safeguarding arrangements.
- Ensure that the school complies with its duties under the above child protection and safeguarding legislation.
- Guarantee that the policies, procedures and training opportunities in the school are effective and comply with the law at all times.
- Guarantee that the school contributes to multi-agency working in line with the statutory guidance '[Working Together to Safeguard Children](#)'.
- Confirm that the school's safeguarding arrangements take into account the procedures and practices of the LA as part of the inter-agency safeguarding procedures.
- Understand the local criteria for action and the local protocol for assessment, and ensure these are reflected in the school's policies and procedures.
- Comply with its obligations under section 14B of the Children Act 2004 to supply the local safeguarding arrangements with information to fulfil its functions.
- Ensure that staff working directly with children read at least Part one of KCSIE.
- Ensure that staff who do not work directly with children read either Part one or Annex A of KCSIE. **NB:** Individual schools assess which guidance will be most effective for their staff to safeguard and promote the welfare of children.
- Ensure that mechanisms are in place to assist staff to understand and discharge their role and responsibilities in regard to safeguarding children.
- Ensure a senior board level lead takes leadership responsibility for safeguarding arrangements.
- Appoint a member of staff from the SLT to the role of DSL as an explicit part of the role-holder's job description.
- Appoint one or more deputy DSLs to provide support to the DSL, and ensure that they are trained to the same standard as the DSL and that the role is explicit in their job descriptions.
- Facilitate a whole-school approach to safeguarding; this includes ensuring that safeguarding and child protection are at the forefront and underpin all relevant aspects of process and policy development.
- Where there is a safeguarding concern, ensure the child's wishes and feelings are taken into account when determining what action to take and what services to provide.
- Ensure systems are in place, children to confidently report abuse, knowing that their concerns will be treated seriously, and they can safely express their views and give feedback; these systems will be well-promoted, easily understood, and easily accessible.
- Ensure that staff have due regard to relevant data protection principles that allow them to share and withhold personal information.
- Ensure that a member of the governing board is nominated to liaise with the LA and/or partner agencies on issues of child protection and in the event of allegations of abuse made against the headteacher or another governor.
- Guarantee that there are effective and appropriate policies and procedures in place.
- Ensure all relevant persons are aware of the school's local safeguarding arrangements, including the governing board itself, the SLT and DSL.

- Make sure that pupils are taught about safeguarding, including protection against dangers online (including when they are online at home), through teaching and learning opportunities, as part of providing a broad and balanced curriculum.
- Adhere to statutory responsibilities by conducting pre-employment checks on staff who work with children, taking proportionate decisions on whether to ask for any checks beyond what is required.
- Ensure that staff are appropriately trained to support pupils to be themselves at school, e.g. if they are LGBTQ+.
- Ensure the school has clear systems and processes in place for identifying possible mental health problems in pupils, including clear routes to escalate concerns and clear referral and accountability systems.
- Guarantee that volunteers are appropriately supervised.
- Make sure that at least one person on any appointment panel has undertaken safer recruitment training.
- Ensure that all staff receive safeguarding and child protection training updates, e.g. emails, as required, but at least annually.
- Ensure that all governors receive appropriate safeguarding and child protection training upon their induction and that this training is updated regularly.
- Certify that there are procedures in place to handle allegations against staff, supply staff, volunteers and contractors.
- Confirm that there are procedures in place to make a referral to the DBS and the Teaching Regulation Agency (TRA), where appropriate, if a person in regulated activity has been dismissed or removed due to safeguarding concerns or would have been had they not resigned.
- Guarantee that there are procedures in place to handle pupils' allegations against other pupils.
- Ensure that appropriate disciplinary procedures are in place, as well as policies pertaining to the behaviour of pupils and staff.
- Ensure that procedures are in place to eliminate unlawful discrimination, harassment and victimisation, including those in relation to child-on-child abuse.
- Guarantee that there are systems in place for pupils to express their views and give feedback.
- Establish an early help procedure and ensure all staff understand the procedure and their role in it.
- Appoint a designated teacher to promote the educational achievement of LAC and ensure that this person has undergone appropriate training.
- Ensure that the designated teacher works with the VSH to discuss how the pupil premium funding can best be used to support LAC.
- Introduce mechanisms to assist staff in understanding and discharging their roles and responsibilities.
- Make sure that staff members have the skills, knowledge and understanding necessary to keep LAC safe, particularly with regard to the pupil's legal status, contact details and care arrangements.
- Put in place appropriate safeguarding responses for pupils who become absent from education, particularly on repeat occasions and/or for prolonged periods, to help identify any risk of abuse, neglect or exploitation, and prevent the risk of their disappearance in future.

- Ensure that all members of the governing board have been subject to an enhanced DBS check.
- Create a culture where staff are confident to challenge senior leaders over any safeguarding concerns.
- Be aware of their obligations under the Human Rights Act 1998, the Equality Act 2010 (including the Public Sector Equality Duty), the Data Protection Act 2018, the UK GDPR and the local multi-agency safeguarding arrangements.

The headteacher has a duty to:

- Ensure that the policies and procedures adopted by the governing board, particularly concerning referrals of cases of suspected abuse and neglect, are followed by staff.
- Provide staff with the appropriate policies and information upon induction.
- Ensure that the school completes all of the annual Barnet safeguarding audits

The DSL has a duty to:

- Take lead responsibility for safeguarding and child protection, including online safety and understanding the filtering and monitoring systems and processes in place.
- Provide advice and support to other staff on child welfare, safeguarding and child protection matters.
- Take part in strategy discussions and inter-agency meetings, and/or support other staff to do so.
- Contribute to the assessment of children, and/or support other staff to do so.
- During term time, be available during school hours for staff to discuss any safeguarding concerns. **NB:** Individual schools, working with the DSL, define what “available” means and whether, in exceptional circumstances, availability via phone, videocall, or other media is an acceptable substitution for in-person availability.
- Arrange, alongside the school, adequate and appropriate cover for any activities outside of school hours or terms.
- Refer cases:
 - To CSCS where abuse and neglect are suspected, and support staff who make referrals to CSCS.
 - To the Channel programme where radicalisation concerns arise, and support staff who make referrals to the Channel programme.
 - To the DBS where a person is dismissed or has left due to harm, or risk of harm, to a child.
 - To the police where a crime may have been committed, in line with the National Police Chiefs’ Council (NPCC) guidance.
- Act as a source of support, advice and expertise for all staff.
- Act as a point of contact with the safeguarding partners.
- Liaise with the headteacher to inform them of issues, especially regarding ongoing enquiries under section 47 of the Children Act 1989 and police investigations.
- Liaise with the deputy DSLs to ensure effective safeguarding outcomes.
- Liaise with the case manager and the LA designated officers (LADOs) for child protection concerns in cases concerning staff.
- Liaise with staff on matters of safety, safeguarding and welfare, including online and digital safety.

- Liaise with staff when deciding whether to make a referral by liaising with relevant agencies so that children's needs are considered holistically.
- Liaise with the senior mental health lead and, where available, the mental health support team, where safeguarding concerns are linked to mental health.
- Promote supportive engagement with parents in safeguarding and promoting the welfare of children, including where families may be facing challenging circumstances.
- Work with the headteacher and relevant strategic leads, taking lead responsibility for promoting educational outcomes by knowing the welfare, safeguarding and child protection issues that children in need are experiencing, or have experienced, and identifying the impact that these issues might be having on their attendance, engagement and achievement at school. This includes:
 - Ensuring that the school knows which pupils have or had a social worker.
 - Understanding the academic progress and attainment of these pupils.
 - Maintaining a culture of high aspirations for these pupils.
 - Supporting teachers to provide additional academic support or reasonable adjustments to help these pupils reach their potential.
 - Helping to promote educational outcomes by sharing the information about the welfare, safeguarding and child protection issues these pupils are experiencing with teachers and the SLT.
- Ensure that child protection files are kept up-to-date and only accessed by those who need to do so.
- Ensure that a pupil's child protection file is transferred as soon as possible, and within five days, when transferring to a new school, and consider any additional information that should be shared.
- Ensure each member of staff has access to and understands the school's Child Protection and Safeguarding Policy and procedures – this will be discussed during the staff induction process.
- Work with the governing board to ensure the school's Child Protection and Safeguarding Policy is reviewed annually, and the procedures are updated and reviewed regularly.
- Ensure the school's Child Protection and Safeguarding Policy is available publicly, and parents are aware that the school may make referrals for suspected cases of abuse or neglect, as well as the role the school plays in these referrals.
- Link with safeguarding partner arrangements to make sure that staff are aware of the training opportunities available and the latest local policies on safeguarding.
- Undergo training, and update this training at least every two years.
- Obtain access to resources and attend any relevant or refresher training courses.
- Encourage a culture of listening to children and taking account of their wishes and feelings; this includes understanding the difficulties pupils may have in approaching staff about their circumstances and considering how to build trusted relationships that facilitate communication.
- Support and advise staff and help them feel confident on welfare, safeguarding and child protection matters: specifically, to ensure that staff are supported during the referrals processes; and to support staff to consider how safeguarding, welfare and educational outcomes are linked, including to inform the provision of academic and pastoral support.

- Understand the importance of information sharing, including within school, with other schools, and with the safeguarding partners, other agencies, organisations and practitioners.
- Understand relevant data protection legislation and regulations, especially the Data Protection Act 2018 and the UK GDPR.
- Keep detailed, accurate, secure written records of safeguarding concerns, decisions made, and whether or not referrals have been made, and understand the purpose of this record-keeping.

At HPS we have a DSL for Looked after Children. The designated teacher has a responsibility for promoting the educational achievement of LAC and PLAC, and for children who have left care through adoption, special guardianship or child arrangement orders or who were adopted from state care outside England and Wales.

At Holly Park the role of the DSL is also:

- To ensure new staff receive a safeguarding information card and induction about what to do and who to go to on their first day at school and this is followed up by face to face training within the first two weeks.
- To ensure that the appropriate information, training and support is given to all staff. Holly Park will ensure that all Designated Professionals receive appropriate training at least every two years, and that all staff receive an update annually and in depth training every three years. In this way the school can support whole –school understanding of the relevant documents through training, quizzes etc. A signed attendance sheet will be kept from this training
- To ensure that the office staff give out a leaflet to supply teachers about what to do and who to go to on their first day in the school
- To ensure that information about who the key safeguarding personnel are and to have this displayed around the school in key positions.
- To ensure that the Senior Leadership Team are kept fully informed of any concerns and ongoing issues, and when appropriate, decide with them when to take further action about specific concerns
- To lead the pastoral Team
- To work with the Governor responsible for Safeguarding, and report to the Staffing and Pupil Welfare sub-committee termly
- To write a section about safeguarding for the termly Headteacher report to governors.

5. Multi-agency working

The school contributes to multi-agency working as part of its statutory duty. The school is aware of and will follow the local safeguarding arrangements organised by the Barnet Safeguarding Children Partnership.

The school will be fully engaged, involved, and included in local safeguarding arrangements. Once the school is named as a relevant agency by local safeguarding partners, it will follow its statutory duty to cooperate with the published arrangements in the same way as other relevant agencies. The school will act in accordance with the safeguarding arrangements.

The school will work with MASH, the police, health services and other services to protect the welfare of its pupils, through the early help process and by contributing to multi-agency plans to provide additional support.

Where a need for early help is identified, the school will allow access for MASH from the host LA and, where appropriate, a placing LA, for that LA to conduct (or consider whether to conduct) a section 17 or 47 assessment.

The school also recognises the particular importance of inter-agency working in identifying and preventing CSE.

Information sharing

The school recognises the importance of proactive information sharing between professionals and local agencies in order to effectively meet pupils' needs and identify any need for early help.

Considering the above, staff will be aware that whilst the UK GDPR and the Data Protection Act 2018 place a duty on schools to process personal information fairly and lawfully, they also allow for information to be stored and shared for safeguarding purposes – data protection regulations do not act as a barrier to sharing information where failure to do so would result in the pupil being placed at risk of harm.

Staff members will ensure that fear of sharing information does not stand in the way of their responsibility to promote the welfare and safety of pupils. If staff members are in doubt about sharing information, they will speak to the DSL or deputy DSLs.

6. Early help

Early help means providing support as soon as a problem emerges, at any point in a child's life. The school will be proactive in ensuring that every pupil is able to access full-time education to aid their development and protect them from harm whilst utilising the unique position of having regular daily contact with pupils to identify concerns as early as possible.

Any pupil may benefit from early help, but in particular, staff will be alert to the potential need for early help for pupils who:

- Are disabled, have certain health conditions, or have specific additional needs.
- Have SEND, regardless of whether they have a statutory EHC plan.
- Are suffering from mental ill health.
- Are young carers.
- Show signs of being drawn into anti-social or criminal behaviour, including gang involvement and association with organised crime groups or county lines.
- Are frequently missing or going missing from care or from home.
- Are at risk of modern slavery, trafficking, or sexual or criminal exploitation.
- Are at risk of being radicalised.
- Have family members in custody or is affected by parental offending.
- Are in a family circumstance presenting challenges for them, such as drug and alcohol misuse, adult mental health problems, or domestic abuse.
- Are misusing drugs or alcohol.

- Are at risk of HBA, such as FGM or forced marriage.
- Are privately fostered.
- Have experienced multiple suspensions and are at risk of, or have been, permanently excluded from school, alternative provision or a PRU.

The school will not limit its support to pupils affected by the above and will be mindful of a variety of additional circumstances in which pupils may benefit from early help, for example, if they are:

- Bereaved.
- Viewing problematic or inappropriate online content or developing inappropriate relationships online.
- Have recently returned home to their family from care.
- Missing education, or are persistently absent from school, or not in receipt of full-time education.

Staff will be mindful of all signs of abuse, neglect and exploitation and use their professional curiosity to raise concerns to the DSL.

The DSL will take the lead where early help is appropriate. This includes liaising with other agencies and setting up an inter-agency assessment as appropriate. The local early help process will be followed as required.

Staff may be required to support other agencies and professionals in an early help assessment, in some cases acting as the lead practitioner. Any such cases will be kept under constant review and consideration given to a referral to MASH for assessment for statutory services if the pupil's situation is not improving or is worsening.

7. Abuse, neglect and exploitation

All staff will be aware of the indicators of abuse, neglect and exploitation and will understand that children can be at risk of harm inside and outside of the school, inside and outside of the school, inside and outside of home, and online. Staff will also be aware that pupils can be affected by seeing, hearing or experiencing the effects of abuse.

All staff will understand that abuse, neglect, exploitation and other safeguarding issues are rarely standalone events that can be given a specific definition or one label alone. Staff will understand that, in most cases, multiple issues will overlap one another; therefore, staff will be vigilant and always raise concerns with the DSL.

All staff, especially the DSL and deputy DSLs, will be aware that safeguarding incidents and/or behaviours can be associated with factors outside the school and/or can occur between children outside of these environments; this includes being aware that pupils can be at risk of abuse or exploitation in situations outside their families (extra-familial harms). All staff will be aware of the appropriate action to take following a pupil being identified as at potential risk of abuse and, in all cases, will speak to the DSL if they are unsure.

All staff will be aware that technology is a significant component in many safeguarding and wellbeing issues, including online abuse, cyberbullying, and the sharing of indecent images.

8. Specific safeguarding issues

There are certain specific safeguarding issues that can put children at risk of harm – staff will be aware of these issues.

[Appendix A](#) of this policy sets out details about specific safeguarding issues that pupils may experience and outlines specific actions that would be taken in relation to individual issues.

9. Child-on-child abuse

For the purposes of this policy, “**child-on-child abuse**” is defined as abuse between children.

The school has a zero-tolerance approach to abuse, including child-on-child abuse, as confirmed in the Child Protection and Safeguarding Policy’s statement of intent.

All staff will be aware that child-on-child abuse can occur between pupils of any age and gender, both inside and outside of school, as well as online. All staff will be aware of the indicators of child-on-child abuse, how to identify it, and how to respond to reports. All staff will also recognise that even if no cases have been reported, this is not an indicator that child-on-child abuse is not occurring. All staff will speak to the DSL if they have any concerns about child-on-child abuse.

When identifying pupils at risk of potential harm or who have been harmed by their peers, staff members will look out for a number of indicators including, but not limited to, the following:

- Injuries in unusual places, such as bite marks on the neck, that are also inconsistent with their age
- Lack of concentration and acting withdrawn
- Knowledge ahead of their age, e.g. sexual knowledge
- Use of explicit language
- Fear of abandonment
- Depression and low self-esteem
- Changes to their social group, e.g. spending time with older pupils, or social isolation
- Alcohol or substance misuse

All staff will understand the importance of challenge inappropriate behaviour between peers, and will not tolerate abuse as “banter” or “part of growing up”.

Child-on-child abuse can be manifested in many different ways, including:

- Bullying, including cyberbullying and prejudice-based or discriminatory bullying.
- Abuse in intimate personal relationships between peers – sometimes known as ‘teenage relationship abuse’.
- Physical abuse – this may include an online element which facilitates, threatens and/or encourages physical abuse.

- Sexual violence – this may include an online element which facilitates, threatens and/or encourages sexual violence.
- Sexual harassment, including online sexual harassment, which may be standalone or part of a broader pattern of abuse.
- Causing someone to engage in sexual activity without consent.
- The consensual and non-consensual sharing of nude and semi-nude images and/or videos.
- Upskirting.
- Initiation- and hazing-type violence and rituals, which can include activities involving harassment, abuse or humiliation used as a way of initiating a person into a group, and may also include an online element.

All staff will be clear as to the school's policy and procedures regarding child-on-child abuse and the role they have to play in preventing it and responding where they believe a child may be at risk from it.

If the incident/allegation involves harmful sexual behaviours the safeguarding team will:

- Reassure the victim, ensuring that they feel safe in school
- Offer the student support through, the school Learning Mentor or a referral to Early help/BICS
- Assess whether a MASH or Police referral is required
- Complete a risk assessment
- Where appropriate, sanction the perpetrator in line with the behaviour and anti-bullying policy
- Refer the perpetrator for support through early help, safer schools' team or MASH

Staff will follow these procedures, as well as the procedures outlined in the school's Anti-bullying Policy, behaviour policy and Suspension and Exclusion Policy, where relevant.

Pupils will be made aware of how to raise concerns or make a report and how any reports will be handled. This includes the process for reporting concerns about friends or peers. Pupils will also be reassured that they will be taken seriously, be supported, and kept safe.

10. Online safety and personal electronic devices

The school will adhere to the Online Safety Policy at all times.

As part of a broad and balanced curriculum, all pupils will be made aware of online risks and taught how to stay safe online.

Through training, all staff members will be made aware of:

- Pupil attitudes and behaviours which may indicate they are at risk of potential harm online.
- The procedure to follow when they have a concern regarding a pupil's online activity.

The school will ensure that appropriate filtering systems are in place on school devices and school networks to prevent children accessing inappropriate material, in accordance with the school's online safety Policy. The school will, however, ensure that the use of filtering and monitoring systems does not cause "over blocking", which may lead to unreasonable restrictions as to what pupils can be taught online. The school will also ensure that it meets the filtering and monitoring standards published by the DfE.

Staff will be aware of the filtering and monitoring systems in place and will know how to escalate concerns where they are identified. Staff will be made aware of their expectations and responsibilities relating to filtering and monitoring systems during their induction.

Further information regarding the school's approach to online safety can be found in the Online Safety Policy.

Communicating with parents

As part of the usual communication with parents, the school will reinforce the importance of pupils being safe online and inform parents that they will find it helpful to understand what systems the school uses to filter and monitor internet use.

The school will also make it clear to parents what their children are being asked to do online for school.

Reviewing online safety

The school will carry out an annual review of its approach to online safety, supported by an annual risk assessment that considers and reflects the risks faced by pupils.

Personal electronic devices

The use of personal electronic devices, including mobile phones and cameras, by staff and pupils is closely monitored by the school, in accordance with the Staff ICT and Electronic Devices Policy and Pupils' Personal Electronic Devices Policy.

Photographs and videos of pupils will be carefully planned before any activity with particular regard to consent and adhering to the school's Data Protection Policy and Photography Policy. The DPO will oversee the planning of any events where photographs and videos will be taken.

Where photographs and videos will involve pupils who are LAC, adopted pupils, or pupils for whom there are security concerns, the headteacher will liaise with the DSL to determine the steps involved. The DSL will, in known cases of pupils who are LAC or who have been adopted, liaise with the pupils' social workers, carers or adoptive parents to assess the needs and risks associated with the pupils.

Staff will report any concerns about pupils' or other staff members' use of personal electronic devices to the DSL, following the appropriate procedures.

Upskirting

Under the Voyeurism (Offences) Act 2019, it is an offence to operate equipment for the purpose of upskirting. "**Operating equipment**" includes enabling, or securing, activation by another person without that person's knowledge, e.g. a motion-activated camera.

Upskirting will not be tolerated by the school. Any incidents of upskirting will be reported to the DSL, who will then decide on the next steps to take, which may include police involvement.

11. Consensual and non-consensual sharing of indecent images and videos

The school will ensure that staff are aware to treat the consensual and non-consensual sharing of nude and semi-nude images and/or videos (also known as “sexting” or youth-produced sexual images) as a safeguarding concern.

Staff will receive appropriate training regarding child sexual development and will understand the difference between sexual behaviour that is considered normal and expected for the age of the pupil, and sexual behaviour that is inappropriate and harmful. Staff will receive appropriate training around how to deal with instances of sharing nudes and semi-nudes in the school community, including understanding motivations, assessing risks posed to pupils depicted in the images, and how and when to report instances of this behaviour.

Staff will be aware that creating, possessing, and distributing indecent imagery of children is a criminal offence, regardless of whether the imagery is created, possessed, and distributed by the individual depicted; however, staff will ensure that pupils are not unnecessarily criminalised.

Where a member of staff becomes aware of an incidence of sharing nudes and/or semi-nudes, they will refer this to the DSL as soon as possible.

The school’s full response to incidents of consensual and non-consensual sharing of indecent images and videos can be found in the Youth-produced Sexual Imagery Policy.

12. Context of safeguarding incidents

Safeguarding incidents can occur outside of school and can be associated with outside factors. All staff, particularly the DSL and deputy DSLs, will always consider the context of safeguarding incidents. Assessment of pupils’ behaviour will consider whether there are wider environmental factors that are a threat to their safety and/or welfare. The school will provide as much contextual information as possible when making referrals to MASH.

13. Pupils potentially at greater risk of harm

The school recognises that some groups of pupils can face additional safeguarding challenges, both online and offline, and understands that further barriers may exist when determining abuse and neglect in these groups of pupils. Additional considerations for managing safeguarding concerns and incidents amongst these groups are outlined below.

Pupils who need social workers

Pupils may need social workers due to safeguarding or welfare needs. These needs can leave pupils vulnerable to further harm and educational disadvantage.

As a matter of routine, the DSL will hold and use information from the LA about whether a pupil has a social worker in order to make decisions in the best interests of the pupil’s safety, welfare, and educational outcomes.

Where a pupil needs a social worker, this will inform decisions about safeguarding, e.g. responding to unauthorised absence, and promoting welfare, e.g. considering the provision pastoral or academic support.

Home-educated children

Parents may choose elective home education (EHE) for their children. In some cases, EHE can mean that children are less visible to the services needed to safeguard and support them.

In line with the Education (Pupil Registration) (England) Regulations 2006, the school will inform the LA of all deletions from the admissions register when a pupil is taken off roll.

Where a parent has expressed their intention to remove a pupil from school for EHE, the school, in collaboration with the LA and other key professionals, will coordinate a meeting with the parent, where possible, before the final decision has been made, particularly if the pupil has SEND, is vulnerable, and/or has a social worker.

LAC and PLAC

Children most commonly become looked after because of abuse and/or neglect. Because of this, they can be at potentially greater risk in relation to safeguarding. PLAC, also known as care leavers, can also remain vulnerable after leaving care.

The governing board will ensure that staff have the skills, knowledge and understanding to keep LAC and PLAC safe. This includes ensuring that the appropriate staff have the information they need, such as:

- Looked after legal status, i.e. whether they are looked after under voluntary arrangements with consent of parents, or on an interim or full care order.
- Contact arrangements with parents or those with parental responsibility.
- Care arrangements and the levels of authority delegated to the carer by the authority looking after the pupil.

The DSL will be provided with the necessary details of pupils' social workers and the VSH, and, for PLAC, personal advisers.

Further details of safeguarding procedures for LAC and PLAC are outlined in the school's LAC Policy.

Pupils with SEND

When managing safeguarding in relation to pupils with SEND, staff will be aware of the following:

- Certain indicators of abuse, such as behaviour, mood and injury, may relate to the pupil's disability without further exploration; however, it should never be assumed that a pupil's indicators relate only to their disability
- Pupils with SEND can be disproportionately impacted by issues such as bullying, without outwardly showing any signs
- Communication barriers may exist, as well as difficulties in overcoming these barriers

When reporting concerns or making referrals for pupils with SEND, the above factors will always be taken into consideration. When managing a safeguarding issue relating to a pupil with SEND, the DSL will liaise with the school's SENCO, as well as the pupil's parents where appropriate, to ensure that the pupil's needs are met effectively.

LGBTQ+ pupils

The fact that a pupil may be LGBTQ+ is not in itself an inherent risk factor for harm; however, staff will be aware that LGBTQ+ pupils can be targeted by other individuals. Staff will also be aware that, in some cases, a pupil who is perceived by others to be LGBTQ+ (whether they are or not) can be just as vulnerable as pupils who identify as LGBTQ+.

Staff will also be aware that the risks to these pupils can be compounded when they do not have a trusted adult with whom they can speak openly with. Staff will endeavour to reduce the additional barriers faced by these pupils and provide a safe space for them to speak out and share any concerns they have.

Pupils requiring mental health support

All staff will be made aware that mental health problems can, in some cases, be an indicator that a pupil has suffered, or is at risk of suffering, abuse, neglect or exploitation.

14. Use of the school premises for non-school activities

Where the governing board hires or rents out school facilities or the school premises to organisations or individuals, e.g. for providers to run community or extracurricular activities, it will ensure that appropriate safeguarding arrangements are in place to keep pupils safe. The school will refer to the DfE's guidance on keeping children safe in out-of-school settings in these circumstances.

Where the governing board provides the activities under the direct supervision or management of school staff, child protection arrangements will apply. Where activities are provided separately by another body, this may not be the case; therefore, the governing board will seek assurance that the body concerned has appropriate safeguarding and child protection policies and procedures in place, including inspecting these as needed. The governing board will also ensure that there are arrangements in place to liaise with the school on these matters where appropriate. The governing board will ensure safeguarding requirements are included in any transfer of control agreement, i.e. a lease or hire agreement, as a condition of use and occupation of the premises, and specify that failure to comply with this would lead to termination of the agreement.

Extracurricular activities and clubs

External bodies that host extracurricular activities and clubs at the school, e.g. charities or companies, will work in collaboration with the school to effectively safeguard pupils and adhere to local safeguarding arrangements.

Staff and volunteers running extracurricular activities and clubs are aware of their safeguarding responsibilities and promote the welfare of pupils. Paid and volunteer staff understand how they should respond to child protection concerns and how to make a referral to MASH or the police, if necessary.

All national governing bodies of sport that receive funding from either Sport England or UK Sport must aim to meet the Standards for Safeguarding and Protecting Children in Sport.

15. Alternative provision

The school will remain responsible for a pupil's welfare during their time at an alternative provider. When placing a pupil with an alternative provider, the school will obtain written confirmation that the provider has conducted all relevant safeguarding checks on staff and will satisfy itself that the placement is meeting the pupil's needs.

Those responsible for the commissioning of alternative provision will be aware that pupils in alternative provision will often have complex needs – they will be mindful of the additional risk of harm that these pupils may be vulnerable to.

16. Work experience

When a pupil is sent on work experience, the school will ensure that the provider has appropriate safeguarding policies and procedures in place. Where the school has pupils conduct work experience at the school, an enhanced DBS check will be obtained if the pupil is over the age of 16.

17. Homestay exchange visits

School-arranged homestays in UK

Where the school is arranging for a visiting child to be provided with care and accommodation in the UK in the home of a family to which the child is not related, the responsible adults are considered to be in regulated activity for the period of the stay. In such cases, the school is the regulated activity provider; therefore, the school will obtain all the necessary information required, including a DBS enhanced certificate with barred list information, to inform its assessment of the suitability of the responsible adults.

Where criminal record information is disclosed, the school will consider, alongside all other information, whether the adult is a suitable host. In addition to the responsible adults, the school will consider whether a DBS enhanced certificate should be obtained for anyone else aged over 16 in the household.

School-arranged homestays abroad

The school will liaise with partner schools to discuss and agree the arrangements in place for the visit. The school will consider, on a case-by-case basis, whether to contact the relevant foreign embassy or High Commission of the country in question to ascertain what checks may be possible in respect of those providing homestay outside of the UK. The school will use its professional judgement to assess whether the arrangements are appropriate and sufficient to safeguard every child involved in the exchange. Pupils will be provided with emergency contact details to use where an emergency occurs or a situation arises that makes them feel uncomfortable.

Privately arranged homestays

Where a parent or pupil arranges their own homestay, this is a private arrangement and the school is not the regulated activity provider.

Private fostering

Where a period of UK homestay lasts 28 days or more for a child aged under 16, or under 18 for a child with SEND, this may amount to private fostering under the Children Act 1989. Where the school becomes aware of a pupil being privately fostered, they will notify the LA as soon as possible to allow the LA to conduct any necessary checks.

18. Concerns about pupils

If a member of staff has any concern about a pupil's welfare, or a pupil has reported a safeguarding concern in relation to themselves or a peer, they will act on them immediately by speaking to the DSL or deputy DSLs.

Staff will be aware that pupils may not feel ready or know how to tell someone that they are being abused, exploited or neglected, and/or they may not recognise their experiences as harmful. Staff will be aware that this must not prevent them from having professional curiosity and speaking to the DSL, or deputy DSL, if they have a concern about a pupil.

All staff members are aware of the procedure for reporting concerns and understand their responsibilities in relation to confidentiality and information sharing, as outlined in the Communication and confidentiality section of this policy.

All Holly Park staff have access to CPOMs and should log concerns on there as soon as possible

The DSL team have a specific day where it is their responsibility to check CPOMs at regular intervals.

Urgent concerns should be reported to a DSL in person and immediately

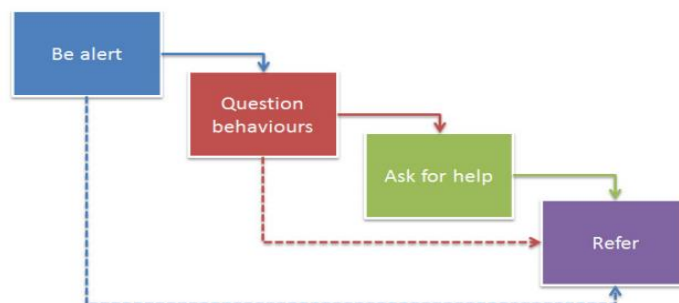
Where the DSL is not available to discuss the concern, staff members will contact the deputy DSLs with the matter.

If a referral is made about a pupil by a deputy DSL, they will inform the DSL as soon as possible and all paperwork will be uploaded to CPOMs as soon as possible.

Holly Park adheres to the Barnet Local Safeguarding Children Procedures.

There are four key steps for professionals to follow to help identify and respond appropriately to possible abuse and/or neglect.

All members of staff are expected to be aware of and follow this approach:



It may not always be appropriate to go through all four stages sequentially and if a child is in immediate danger or is at risk of harm, a referral should be made immediately to children's social care and/or the police.

The role of the school in situations where there are child protection concerns is NOT to investigate but to recognise and refer.

It is the responsibility of the DSL to receive and collate information regarding individual children, to make immediate and on-going assessments of potential risk and to decide actions necessary (with parents / carers in most cases). This includes the need to make referrals to partner agencies and services.

To help with this decision she may choose to consult with the MASH team

New referrals to services will be made using the agreed Barnet County Council process i.e. the Early Help Notification form or inter-agency referral form for referrals to MASH. These will be made with reference to the Barnet Interagency Threshold Criteria for Children in Need.

In situations where there are felt to be urgent or grave concerns, a telephone referral will be made prior to the form being completed and sent to the County Duty Social Work Team. Concerns for children who are already known to services will be passed to the allocated worker / Team.

All members of staff are aware of the process for making referrals to MASH for statutory assessments under the Children Act that may follow a referral, along with the role they might be expected to play in such assessments.

In all but the most exceptional circumstances, parents /carers will be made aware of the concerns felt for a child or young person at the earliest possible stage. In the event of a referral to MASH being necessary, parents/carers will be informed unless there is a valid reason not to do so.

In the absence of the availability of the DSL to discuss an immediate and urgent concern, staff can seek advice from the MASH Team. If anyone other than the DSL makes a referral to external services, then they will inform the DSL as soon as possible.

On occasion, staff may pass information about a child to the DSL, but remain anxious about action subsequently taken. Staff should feel able to clarify with the DSL further progress, so that they can reassure themselves the child is safe and their welfare is being considered.

If following this process, the staff member remains concerned that appropriate action is not being taken then the member of staff should seek further direct consultation from a member of the MASH team who will be able to discuss the concern and provide further advice on appropriate action to be taken.

If after a referral a child's situation does not appear to be improving then the DSL (or the person that made the referral) will **press for reconsideration** to ensure that the schools concerns have been addressed and, most importantly, that the child's situation improves. Professional disagreements (escalation/Resolution) will happen if necessary. The school will continue to support a child after a referral has been made if appropriate.

The school has a policy of – *if in doubt pass on the information to the Barnet MASH team and get advice*

The school undertakes an annual Safeguarding Audit to ensure that procedures are up to date.

Ongoing attention will be paid to the attendance and development of any child about whom the school has any concern. The school will maintain a Pastoral Team to meet regularly to oversee these children and allocate a key worker who will hold information and be a point of reference for staff.

The LA will make a decision regarding what action is required within one working day of the referral being made and will notify the referrer. Staff are required to monitor a referral if they do not receive information from the LA regarding what action is necessary for the pupil. If the situation does not improve after a referral, the DSL will ask for reconsideration to ensure that their concerns have been addressed and that the situation improves for the pupil.

If early help is appropriate, the case will be kept under constant review. If the pupil's situation does not improve, a referral will be considered. All concerns, discussions and decisions made, as well as the reasons for making those decisions, will be recorded in writing by the DSL and kept securely on CPOMs.

If a pupil is in immediate danger, a referral will be made to MASH and/or the police immediately. If a pupil has committed a crime, such as sexual violence, the police will be notified without delay.

Where there are safeguarding concerns, the school will ensure that the pupil's wishes are always taken into account, and that there are systems available for pupils to provide feedback and express their views. When responding to safeguarding concerns, staff members will act calmly and supportively, ensuring that the pupil feels like they are being listened to and believed.

An inter-agency assessment will be undertaken where a child and their family could benefit from coordinated support from more than one agency. These assessments will identify what help the child and family require in preventing needs escalating to a point where intervention would be needed.

19. Managing referrals

All staff members, in particular the DSL, will be aware of the LA's arrangements in place for managing referrals. The DSL will provide staff members with clarity and support where needed. When making a referral to MASH or other external agencies, information will be shared in line with confidentiality requirements and will only be shared where necessary to do so.

The DSL will work alongside external agencies, maintaining continuous liaison, including multi-agency liaison where appropriate, in order to ensure the wellbeing of the pupils involved. The DSL will work closely with the police to ensure the school does not jeopardise any criminal proceedings, and to obtain help and support as necessary.

Where a pupil has been harmed or is in immediate danger or at risk of harm, the referrer will be notified of the action that will be taken within one working day of a referral being made.

Where this information is not forthcoming, the referrer will contact the assigned social worker for more information.

The school will not wait for the start or outcome of an investigation before protecting the victim and other pupils: this applies to criminal investigations as well as those made by MASH. Where MASH decide that a statutory investigation is not appropriate, the school will consider referring the incident again if it is believed that the pupil is at risk of harm. Where MASH decide that a statutory investigation is not appropriate and the school agrees with this decision, the school will consider the use of other support mechanisms, such as early help and pastoral support.

At all stages of the reporting and referral process, the pupil will be informed of the decisions made, actions taken and reasons for doing so. Discussions of concerns with parents will only take place where this would not put the pupil or others at potential risk of harm. The school will work closely with parents to ensure that the pupil, as well as their family, understands the arrangements in place, such as in-school interventions, is effectively supported, and knows where they can access additional support.

20. Concerns about school safeguarding practices

Any concerns regarding the safeguarding practices at the school will be raised with the SLT, and the necessary whistleblowing procedures will be followed, as outlined in the Whistleblowing Policy. If a staff member feels unable to raise an issue with the SLT, they should access other whistleblowing channels such as the NSPCC whistleblowing helpline (0800 028 0285).

21. Safeguarding concerns and allegations of abuse against staff

All allegations against staff, supply staff, volunteers and contractors will be managed in line with Barnet's Allegations of Abuse Against Staff Policy.

The school will ensure all allegations against staff, including those who are not employees of the school, are dealt with appropriately and that the school liaises with the relevant parties.

When managing allegations against staff, the school will recognise the distinction between allegations that meet the harms threshold and allegations that do not, also known as "low-level concerns", as defined in the Allegations of Abuse Against Staff Policy. Allegations that meet the harms threshold include instances where staff have:

- Behaved in a way that has harmed a child, or may have harmed a child.
- Committed or possibly committed a criminal offence against or related to a child.
- Behaved towards a child in a way that indicates they may pose a risk of harm to children.
- Behaved, or may have behaved, in a way that indicates they may not be suitable to work with children.

Low-level concerns should be reported to the Headteacher or the DSL in the absence of the Headteacher.

A low-level form should be completed.

A low-level concern is any concern that an adult has acted in a way that:

- is inconsistent with the staff code of conduct, including inappropriate conduct outside of work.
- doesn't meet the threshold of harm or is not considered serious enough for the school or college to refer to the local authority.

Low-level concerns are part of a spectrum of behaviour. This includes:

- inadvertent or thoughtless behaviour.
- behaviour that might be considered inappropriate depending on the circumstances.
- behaviour which is intended to enable abuse.

Examples of such behaviour could include:

- being over friendly with children.
- having favourites.
- adults taking photographs of children on their mobile phone.
- engaging with a child on a one-to-one basis in a secluded area or behind a closed door.
- using inappropriate sexualised, intimidating or offensive language.

The Headteacher may decide to seek advice from the LADO as necessary.

22. Communication and confidentiality

When recording, holding, using and sharing information, the DSL will ensure that they:

- Understand the importance of information sharing, both within the school and with other schools on transfer including in-year and between primary and secondary education, and with safeguarding partners, other agencies, organisations and practitioners.
- Understand relevant data protection legislation and regulations, in particular the Data Protection Act 2018 and the UK GDPR.
- Are able to keep detailed, accurate, secure written records of all concerns, discussions and decisions made including the rationale of those decisions. This will include instances where referrals were and were not made to another agency such as LA children's social care or the Prevent program.

All child protection and safeguarding concerns will be treated in the strictest of confidence in accordance with school data protection policies.

Where there is an allegation or incident of sexual abuse or sexual violence, the victim is entitled to anonymity by law; therefore, the school will consult its policy and agree on what information will be disclosed to staff and others, in particular the alleged perpetrator and their parents. Where a report of sexual violence or sexual harassment is progressing through the

criminal justice system, the school will do all it can to protect the anonymity of the pupils involved in the case.

Concerns will only be reported to those necessary for its progression and reports will only be shared amongst staff members and with external agencies on a need-to-know basis. During the disclosure of a concern by a pupil, staff members will not promise the pupil confidentiality and will ensure that they are aware of what information will be shared, with whom and why.

Where it is in the public interest, and protects pupils from harm, information can be lawfully shared without the victim's consent, e.g. if doing so would assist the prevention, detection or prosecution of a serious crime. Before doing so, the DSL will weigh the victim's wishes against their duty to protect the victim and others. Where a referral is made against the victim's wishes, it is done so carefully with the reasons for the referral explained to the victim and specialist support offered.

Depending on the nature of a concern, the DSL will discuss the concern with the parents of the pupils involved. Discussions with parents will not take place where they could potentially put a pupil at risk of harm. Discussion with the victim's parents will relate to the arrangements being put in place to safeguard the victim, with the aim of understanding their wishes in terms of support arrangements and the progression of the report. Discussion with the alleged perpetrator's parents will have regards to the arrangements that will impact their child, such as moving classes, with the reasons behind decisions being explained and the available support discussed. External agencies will be invited to these discussions where necessary.

Where confidentiality or anonymity has been breached, the school will implement the appropriate disciplinary procedures as necessary and will analyse how damage can be minimised and future breaches be prevented.

Where a pupil is leaving the school, the DSL will consider whether it is appropriate to share any information with the pupil's new provider, in addition to the child protection file, that will allow the new provider to support the pupil and arrange appropriate support for their arrival.

23. Safer recruitment

The school's full policy and procedures for safer recruitment are outlined in the Safer Recruitment Policy.

An enhanced DBS check with barred list information will be undertaken for all staff members engaged in regulated activity. A person will be considered to be in 'regulated activity' if, as a result of their work, they:

- Are responsible on a daily basis for the care or supervision of children.
- Regularly work in the school at times when children are on the premises.
- Regularly come into contact with children under 18 years of age.

The DfE's DBS Workforce Guides will be consulted when determining whether a position fits the child workforce criteria.

The governing board will conduct the appropriate pre-employment checks for all prospective employees, including internal candidates and candidates who have lived or worked outside the UK.

The appropriate DBS and suitability checks will be carried out for all governors, volunteers, and contractors.

Staff suitability

All centres providing care for pupils under the age of eight must ensure that staff and volunteers working in these settings are not disqualified from doing so under the Childcare (Disqualification) and Childcare (Early Years Provision Free of Charge) (Extended Entitlement) (Amendment) Regulations 2018. A person may be disqualified if they:

- Have certain orders or other restrictions placed upon them.
- Have committed certain offences.

All staff members are required to sign the Staff Disqualification Declaration Form confirming that they are not disqualified from working in a schooling environment. A disqualified person will not be permitted to continue working at the school, unless they apply for and are granted a waiver from Ofsted. The school will provide support with this process.

Ongoing suitability

Following appointment, consideration will be given to staff and volunteers' ongoing suitability – to prevent the opportunity for harm to children or placing children at risk.

Referral to the DBS

The school will refer to the DBS anyone who has harmed a child or poses a risk of harm to a child, or if there is reason to believe the member of staff has committed an offence and has been removed from working in regulated activity. The duty will also apply in circumstances where an individual is deployed to another area of work that is not in regulated activity or they are suspended.

24. Single central record (SCR)

The school keeps an SCR which records all staff, including agency and third-party supply staff, and teacher trainees on salaried routes, who work at the school.

The following information is recorded on the SCR:

- An identity check
- A barred list check
- An enhanced DBS check
- A prohibition from teaching check
- A check of professional qualifications, where required
- A check to determine the individual's right to work in the UK
- Additional checks for those who have lived or worked outside of the UK

For agency and third-party supply staff, the school will also record whether written confirmation from the employment business supplying the member of staff has been received which indicates that all the necessary checks have been conducted (i.e. all the same checks the school would perform on any individual working in the school or who will be providing education on the school's behalf, including through online delivery) and the date that confirmation was received.

If any checks have been conducted for volunteers, this will also be recorded on the SCR. If risk assessments are conducted to assess whether a volunteer should be subject to an enhanced DBS check, the risk assessment will be recorded.

Written confirmation that supply agencies have completed all relevant checks will also be included.

The school is free to record any other information it deems relevant.

The details of an individual will be removed from the SCR once they no longer work at the school.

25. Training

Staff members will undergo safeguarding and child protection training at induction, which will be updated whenever there is a change in legislation.

The induction training will cover:

- The Child Protection and Safeguarding Policy.
- The Child-on-child Abuse Policy and procedures.
- The Staff Code of Conduct.
- Part one of 'Keeping children safe in education' (KCSIE) (or Annex A, if appropriate).
- The Behaviour Policy.
- The Children Absent from Education Policy, including the safeguarding response to children who are absent from education.
- Appropriate child protection and safeguarding training, including online safety training – which, amongst other things, includes an understanding of expectations, applicable roles and responsibilities in relation to filtering and monitoring.
- Information about the role and identity of the DSL and deputy DSLs.

All staff members will also receive regular safeguarding and child protection updates as required, but at least annually. Training will cover, at a minimum:

- The issues surrounding sexual violence and sexual harassment.
- Contextual safeguarding.
- How to keep LAC and PLAC safe.
- CCE and the need to refer cases to the National Referral Mechanism.
- Updated online safety training.

Staff will receive opportunities to contribute towards and inform the safeguarding arrangements in the school.

The DSL and deputy DSLs will undergo child protection and safeguarding training, and update this training at least every two years. The DSL and deputy DSLs will also obtain access to resources and attend any relevant or refresher training courses, ensuring they keep up-to-date with any developments relevant to their role. This will include training to understand:

- The assessment process for providing early help and statutory intervention, including local criteria for action and MASH referral arrangements.
- How LAs conduct child protection case conferences and a child protection review conferences, to enable the DSL to attend and contribute to these effectively when required.
- The importance of providing information and support to MASH.
- The lasting impact that adversity and trauma can have.
- How to be alert to the specific needs of children in need, pupils with SEND and/or relevant health conditions, and young carers.
- The importance of internal and external information sharing.
- The Prevent duty.
- The risks associated with online safety, including the additional risks faced online by pupils with SEND.

It will be the responsibility of the Headteacher and Governing Body, delegated through the designated Governor for Child Protection, to monitor the effective and consistent delivery of this policy.

They will review the policy with reference to:

- Reviewing practice against the procedures outlined
- Reviewing this policy in line with up-dated guidance from Barnet Area Safeguarding & Child Protection Committee
- Listening to children, staff and families and considering their views and comments
- Taking advice from the principal Education Social Worker

26. Links with the UN Rights of the Child

Article 3

The best interests of the child must be a top priority in all things that affect children.

Article 5

Governments must respect the rights and responsibilities of parents and carers to direct and guide their children as they grow up, so that they can enjoy their rights properly.

Article 6

Every child has the right to life. Governments must do all they can to make sure that children survive and develop to their full potential.

Article 7

Every child has the right to a legal name and nationality, as well as the right to know and, as far as possible, to be cared for by their parents.

Article 9

Children must not be separated from their parents unless it is in their best interests (for example, if a parent is hurting a child). Children whose parents have separated have the right to stay in contact with both parents, unless this might hurt the child.

Article 12

Every child has the right to have a say in all matters affecting them, and to have their views taken seriously.

Article 16

Every child has the right to privacy. The law should protect the child's private, family and home life.

Article 17

Every child has the right to reliable information from the media. This should be information that children can understand. Governments must help protect children from materials that could harm them.

Article 19

Governments must do all they can to ensure that children are protected from all forms of violence, abuse, neglect and bad treatment by their parents or anyone else who looks after them.

Article 20

If a child cannot be looked after by their family, governments must make sure that they are looked after properly by people who respect the child's religion, culture and language.

Article 21

If a child is adopted, the first concern must be what is best for the child. All children must be protected and kept safe, whether they are adopted in the country where they were born or in another country.

Article 23

A child with a disability has the right to live a full and decent life with dignity and independence, and to play an active part in the community. Governments must do all they can to provide support to disabled children.

Article 24

Every child has the right to the best possible health. Governments must work to provide good quality health care, clean water, nutritious food and a clean environment so that children can stay healthy. Richer countries must help poorer countries achieve this.

Article 27

Every child has the right to a standard of living that is good enough to meet their physical, social and mental needs. Governments must help families who cannot afford to provide this.

Article 33

Governments must protect children from the use of illegal drugs.

Article 34

Governments must protect children from sexual abuse and exploitation.

Article 36

Governments must protect children from all other forms of bad treatment.

Article 37

No child shall be tortured or suffer other cruel treatment or punishment. A child should be arrested or put in prison only as a last resort and then for the shortest possible time. Children must not be in a prison with adults. Children who are locked up must be able to keep in contact with their family.

27. Monitoring and review

This policy is reviewed at least annually by the DSL and the headteacher. This policy will be updated as needed to ensure it is up-to-date with safeguarding issues as they emerge and evolve, including any lessons learnt.


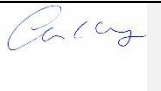
Any changes made to this policy will be communicated to all members of staff. All members of staff are required to familiarise themselves with all processes and procedures outlined in this policy as part of their induction programme.

Revision History

Version	Revision Date	Revised By	Revision
1.0	June 2014	Sally Thomas	Updated in light of current advice
1.1	September 2014	Ann Pelham	Updated in light of current advice
1.2	April 2015	Ann Pelham	Updated in light of current advice
1.2	June 2015	Ann Pelham	Updated in light of current advice
1.3	Summer 2015	Govs S&PW	Reviewed
1.4	October 2015	Ann Pelham	Updated in light of current advice
1.5	December 2015	Safeguarding Team	Updated in light of a team meeting doing a safeguarding audit and review of policy and practice
1.6	March 2016	Ann Pelham	Updated – to reflect new alert form
1.7	March 2016	Ann Pelham	Updated after LA safeguarding review with more info on FGM
1.8	March 2016	Ann Pelham	Updated after PREVENT training
1.9	July 2016	Full govts	Updated, reviewed & ratified
2.0	August 2016	Ann Pelham	Updated in line with guidance from Keeping Children safe in Education 2016
2.1	September 2016	Ann Pelham	Updated in line with DFE guidance for pupils missing in Education
2.2	November 2016	Ann Pelham	Updated after recent advice and guidance
2.3	January 2017	Ann Pelham	Updated based on LA guidance
2.4	June 2017	Ann Pelham	Updated following Website review
2.5	July 2017	Full govts	reviewed & ratified
2.6	September 2018	Ann Pelham	Updated in response to the release of KCSIE 2018.
2.7	July 2019	Full govts	reviewed & ratified
2.8	August 2019	Ann Pelham	Written to reflect KCSIE 2019
2.9	July 2020	Full govts	Reviewed & Ratified
3.0	August 2020	Ann Pelham	Reviewed to reflect KCSIE 2020
3.1	Autumn 2020	Full Govts	Reviewed & Ratified

3.2	August 2021	Ann Pelham	Reviewed to reflect KCSIE 2021
3.3	August 2022	Ann Pelham	Reviewed to reflect KCSIE 2022 and after DSL training
3.4	Autumn 2022	Full govs	Reviewed and ratified
3.5	August 2023	Ann Pelham	Reviewed to reflect KCSIE 2023 and after DSL training
3.6	Autumn 2023	Full govs	Reviewed and ratified
3.7	August 2024	Ann Pelham	Reviewed to reflect KCSIE 2024 and after DSL training
3.8	Autumn 2024	Ann Pelham	Reviewed and ratified

Signed by

	Name	Signature	Date
Headteacher	Ann Pelham		September 2024
Chair of Governors	Clare Hegarty		September 2024

Distribution

Version	Shared with	Date
1.2	<ul style="list-style-type: none"> • Staff via school server • Staff via staff handbook (annually) • Staff via training • New Staff via induction meetings • Parents via Website • Governors via committee meetings • Safeguarding team meetings 	

Review

Date for next review
Autumn term 2025

Specific safeguarding issues

This appendix sets out details about specific safeguarding issues that pupils may experience and outlines specific actions that would be taken in relation to individual issues.

Here are the issues covered:

1. Domestic abuse
2. Homelessness
3. Children absent from education
4. Child abduction and community safety incidents
5. Child criminal exploitation (CCE)
6. Cyber-crime
7. Child sexual exploitation (CSE)
8. Modern slavery
9. FGM
10. Forced marriage
11. Radicalisation
12. Pupils with family members in prison
13. Pupils required to give evidence in court
14. Mental health
15. Serious violence

Domestic abuse

For the purposes of this policy, and in line with the Domestic Abuse Act 2021, “**domestic abuse**” is defined as abusive behaviour of a person towards another person (including conduct directed at someone else, e.g. the person’s child) where both are aged 16 or over and are personally connected. “**Abusive behaviour**” includes physical or sexual abuse, violent or threatening behaviour, controlling or coercive behaviour, economic abuse, psychological or emotional abuse, or another form of abuse. “**Personally connected**” includes people who:

- Are, have been, or have agreed to be married to each other.
- Are, have been, or have agreed to be in a civil partnership with each other.
- Are, or have been, in an intimate personal relationship with each other.
- Each have, or had, a parental relationship towards the same child.
- Are relatives.

The school will recognise the impact of domestic abuse on children, as victims in their own right, if they see, hear or experience the effects of domestic abuse. All staff will be aware of the signs of domestic abuse and follow the appropriate safeguarding procedures where concerns arise.

Homelessness

The DSL and deputy DSLs will be aware of the contact details and referral routes into the Local Housing Authority so that concerns over homelessness can be raised as early as possible.

Indicators that a family may be at risk of homelessness include:

- Household debt.
- Rent arrears.
- Domestic abuse.
- Anti-social behaviour.
- Any mention of a family moving home because “they have to”.

Referrals to the Local Housing Authority do not replace referrals to MASH where a child is being harmed or at risk of harm. For 16- and 17-year-olds, homelessness may not be family-based and referrals to MASH will be made as necessary where concerns are raised.

Children absent from education

A child who is absent from school can be a vital warning sign of a range of safeguarding issues, including neglect, CSE and CCE, particularly county lines. The school will ensure that the response to children persistently being absent from education supports identifying such abuse and helps prevent the risk of pupils becoming absent from education in the future. Staff will monitor pupils that are absent from the school, particularly on repeat occasions and/or prolonged periods, and report them to the DSL following normal safeguarding procedures, in accordance with the Children Absent from Education Policy. The school will inform the LA of any pupil who fails to attend regularly or has been absent without the school’s permission for a continuous period of 10 school days or more.

The school will follow the DfE’s [guidance](#) on improving attendance where there is a need to work with children’s services due to school absences indicating safeguarding concerns.

Admissions register

Pupils are placed on the admissions register at the beginning of the first day that is agreed by the school, or when the school has been notified that the pupil will first be attending. The school will notify the LA within 5 days of when a pupil’s name is added to the admissions register.

The school will ensure that the admissions register is kept up-to-date and accurate at all times and will inform parents when any changes occur. Two emergency contacts will be held for each pupil where possible. Staff will monitor pupils who do not attend the school on the agreed date and will notify the LA at the earliest opportunity.

If a parent notifies the school that their child will live at a different address, the school will record the following information on the admissions register:

- The full name of the parent with whom the pupil will live
- The new address
- The date from when the pupil will live at that address

If a parent notifies the school that their child will be attending a different school, or is already registered at a different school, the following information will be recorded on the admissions register:

- The name of the new school

- The date on which the pupil first attended, or is due to attend, that school

Where a pupil moves to a new school, the school will use a secure internet system to securely transfer pupils' data.

To ensure accurate data is collected to allow effective safeguarding, the school will inform the LA of any pupil who is going to be deleted from the admission register, in accordance with the Education (Pupil Registration) (England) Regulations 2006 (as amended), where they:

- Have been taken out of the school by their parents, and are being educated outside the national education system, e.g. home education.
- Have ceased to attend the school, and no longer live within a reasonable distance of the premises.
- Have been certified by the school's medical officer as unlikely to be in a fit state of health to attend, before ceasing to be of compulsory school age, and their parent has not indicated the intention to the pupil continuing to attend school after ceasing to be of compulsory school age.
- Have been in custody for a period of more than four months due to a final court order and the school does not reasonably believe they will be returning to the school at the end of that period.
- Have been permanently excluded.

The school will also remove a pupil from the admissions register where the school and LA has been unable to establish the pupil's whereabouts after making reasonable enquiries into their attendance.

If a pupil is to be removed from the admissions register, the school will provide the LA with the following information:

- The full name of the pupil
- The full name and address of any parent with whom the pupil lives
- At least one telephone number of the parent with whom the pupil lives
- The full name and address of the parent with whom the pupil is going to live, and the date that the pupil will start living there, if applicable
- The name of the pupil's new school and the pupil's expected start date there, if applicable
- The grounds for removal from the admissions register under regulation 8 of the Education (Pupil Registration) (England) Regulations 2006 (as amended)

The school will work with the LA to establish methods of making returns for pupils back into the school. The school will highlight to the LA where they have been unable to obtain necessary information from parents, e.g. where an address is unknown. The school will also highlight any other necessary contextual information, including safeguarding concerns.

Child abduction and community safety incidents

For the purposes of this policy, “**child abduction**” is defined as the unauthorised removal or retention of a child from a parent or anyone with legal responsibility for the child. Child abduction can be committed by parents and other relatives, other people known to the victim, and strangers.

All staff will be alert to community safety incidents taking place in the vicinity of the school that may raise concerns regarding child abduction, e.g. people loitering nearby or unknown adults conversing with pupils.

Pupils will be provided with practical advice and lessons to ensure they can keep themselves safe outdoors.

Child criminal exploitation (CCE)

For the purposes of this policy, “**child criminal exploitation**” is defined as a form of abuse where an individual or group takes advantage of an imbalance of power to coerce, manipulate or deceive a child into taking part in criminal activity, for any of the following reasons:

- In exchange for something the victim needs or wants
- For the financial advantage or other advantage of the perpetrator or facilitator
- Through violence or the threat of violence

Specific forms of CCE can include:

- Being forced or manipulated into transporting drugs or money through county lines.
- Working in cannabis factories.
- Shoplifting or pickpocketing.
- Committing vehicle crime.
- Committing, or threatening to commit, serious violence to others.

The school will recognise that pupils involved in CCE are victims themselves, regardless of whether they have committed crimes, and even if the criminal activity appears consensual. The school will also recognise that pupils of any gender are at risk of CCE.

School staff will be aware of the indicators that a pupil is the victim of CCE, including:

- Appearing with unexplained gifts, money or new possessions.
- Associating with other children involved in exploitation.
- Suffering from changes in emotional wellbeing.
- Misusing drugs or alcohol.
- Going missing for periods of time or regularly coming home late.
- Regularly becoming absent from school or education or not taking part.

County lines

For the purposes of this policy, “**county lines**” refers to gangs and organised criminal networks exploiting children to move, store or sell drugs and money into one or more areas, locally and/or across the UK.

As well as the general indicators for CCE, school staff will be aware of the specific indicators that a pupil may be involved in county lines, including:

- Going missing and subsequently being found in areas away from their home.
- Having been the victim or perpetrator of serious violence, e.g. knife crime.
- Receiving requests for drugs via a phone line.

- Moving drugs.
- Handing over and collecting money for drugs.
- Being exposed to techniques such as 'plugging', where drugs are concealed internally to avoid detection.
- Being found in accommodation they have no connection with or a hotel room where there is drug activity.
- Owing a 'debt bond' to their exploiters.
- Having their bank account used to facilitate drug dealing.

Staff will be made aware of pupils with missing episodes who may have been trafficked for the purpose of transporting drugs. Staff members who suspect a pupil may be vulnerable to, or involved in, county lines activity will immediately report all concerns to the DSL.

The DSL will consider referral to the National Referral Mechanism on a case-by-case basis and consider involving local services and providers who offer support to victims of county lines exploitation.

Cyber-crime

For the purposes of this policy, "**cyber-crime**" is defined as criminal activity committed using computers and/or the internet. This includes 'cyber-enabled' crimes, i.e. crimes that can happen offline but are enabled at scale and at speed online, and 'cyber-dependent' crimes, i.e. crimes that can be committed only by using a computer. Crimes include:

- Unauthorised access to computers, known as 'hacking'.
- Denial of Service attacks, known as 'booting'.
- Making, supplying or obtaining malicious software, or 'malware', e.g. viruses, spyware, ransomware, botnets and Remote Access Trojans with the intent to commit further offence.

All staff will be aware of the signs of cyber-crime and follow the appropriate safeguarding procedures where concerns arise. This may include the DSL referring pupils to the National Crime Agency's Cyber Choices programme.

Child sexual exploitation (CSE)

For the purposes of this policy, "**child sexual exploitation**" is defined as a form of sexual abuse where an individual or group takes advantage of an imbalance of power to coerce, manipulate or deceive a child into sexual activity, for any of the following reasons:

- In exchange for something the victim needs or wants
- For the financial advantage, increased status or other advantage of the perpetrator or facilitator
- Through violence or the threat of violence

The school will recognise that CSE can occur over time or be a one-off occurrence, and may happen without the pupil's immediate knowledge, e.g. through others sharing videos or images of them on social media. The school will recognise that CSE can affect any pupil who has been coerced into engaging in sexual activities, even if the activity appears consensual; this includes pupils aged 16 and above who can legally consent to sexual activity. The school will

also recognise that pupils may not realise they are being exploited, e.g. they believe they are in a genuine romantic relationship.

School staff will be aware of the key indicators that a pupil is the victim of CSE, including:

- Appearing with unexplained gifts, money or new possessions.
- Associating with other children involved in exploitation.
- Suffering from changes in emotional wellbeing.
- Misusing drugs or alcohol.
- Going missing for periods of time or regularly coming home late.
- Regularly becoming absent from school or education or not taking part.
- Having older partners.
- Suffering from sexually transmitted infections.
- Displaying sexual behaviours beyond expected sexual development.
- Becoming pregnant.

All concerns related to CSE will be managed in line with the school's Child Sexual Exploitation (CSE) Policy.

Where CSE, or the risk of it, is suspected, staff will discuss the case with the DSL. If after discussion a concern remains, local safeguarding procedures will be triggered, including referral to the LA. The LA and all other necessary authorities will then handle the matter to conclusion. The school will cooperate as needed.

Modern slavery

For the purposes of this policy, “**modern slavery**” encompasses human trafficking and slavery, servitude, and forced or compulsory labour. This can include CCE, CSE, and other forms of exploitation.

All staff will be aware of and alert to the signs that a pupil may be the victim of modern slavery. Staff will also be aware of the support available to victims of modern slavery and how to refer them to the National Referral Mechanism.

FGM

For the purposes of this policy, “**FGM**” is defined as all procedures involving the partial or total removal of the external female genitalia or other injury to the female genital organs. FGM is illegal in the UK and a form of child abuse with long-lasting harmful consequences.

All staff will be alert to the possibility of a pupil being at risk of FGM, or already having suffered FGM. If staff are worried about someone who is at risk of FGM or who has been a victim of FGM, they are required to share this information with MASH and/or the police. The school's procedures relating to managing cases of FGM and protecting pupils will reflect multi-agency working arrangements.

As outlined in Section 5B of the Female Genital Mutilation Act 2003 (as inserted by section 74 of the Serious Crime Act 2015), teachers are **legally required** to report to the police any discovery, whether through disclosure by the victim or visual evidence, of FGM on a pupil under the age of 18. Teachers failing to report such cases may face disciplinary action.

Teachers will not examine pupils, and so it is rare that they will see any visual evidence, but they must personally report to the police where an act of FGM appears to have been carried out. Unless the teacher has a good reason not to, they should also consider and discuss any such case with the DSL and involve MASH as appropriate. **NB:** This does not apply to any suspected or at-risk cases, nor if the individual is over the age of 18. In such cases, local safeguarding procedures will be followed.

All staff will be aware of the indicators that pupils may be at risk of FGM. While some individual indicators they may not indicate risk, the presence of two or more indicators could signal a risk to the pupil. It is important to note that the pupil may not yet be aware of the practice or that it may be conducted on them, so staff will be sensitive when broaching the subject.

Indicators that a pupil may be at heightened risk of undergoing FGM include:

- The socio-economic position of the family and their level of integration into UK society.
- The pupil coming from a community known to adopt FGM.
- Any girl with a mother or sister who has been subjected to FGM.
- Any girl withdrawn from PSHE.

Indicators that FGM may take place soon include:

- When a female family elder is visiting from a country of origin.
- A girl confiding that she is to have a 'special procedure' or a ceremony to 'become a woman'.
- A girl requesting help from a teacher if she is aware or suspects that she is at immediate risk.
- A girl, or her family member, talking about a long holiday to her country of origin or another country where FGM is prevalent.

All staff will be vigilant to the signs that FGM has already taken place so that help can be offered, enquiries can be made to protect others, and criminal investigations can begin. Indicators that FGM may have already taken place include the pupil:

- Having difficulty walking, sitting or standing.
- Spending longer than normal in the bathroom or toilet.
- Spending long periods of time away from a classroom during the day with bladder or menstrual problems.
- Having prolonged or repeated absences from school, followed by withdrawal or depression.
- Being reluctant to undergo normal medical examinations.
- Asking for help, but not being explicit about the problem due to embarrassment or fear.

FGM is included in the definition of so-called “**honour-based’ abuse (HBA)**”, which involves crimes that have been committed to defend the honour of the family and/or community. All forms of HBA are forms of abuse and will be treated and escalated as such. Staff will be alert to the signs of HBA, including concerns that a child is at risk of HBA, or has already suffered from HBA, and will consult with the DSL who will activate local safeguarding procedures if concerns arise.

Forced marriage

Forced marriage is a crime. It is a form of abuse directed towards a child or vulnerable adult, including adults who are forced into marriage against their free will.

Forced marriage is a marriage where one or both spouses do not consent to the marriage but are coerced into it. Force can be physical, psychological, financial, sexual and emotional pressure. Forced marriage can be committed if a person lacks capacity, whether or not coercion plays a part.

Under the Anti-social Behaviour, Crime and Policing Act 2014 a person commits an offence if he or she uses violence, threats or any other form of coercion for the purpose of causing another person to enter into a marriage and believes, or ought reasonably to believe, that the conduct may cause the other person to enter into the marriage without free and full consent.

It is an offence to do anything intended to cause a child to marry before the child's eighteenth birthday, whether or not the conduct amounts to violence, threats, or any other form of coercion or deception. This applies to non-binding, unofficial 'marriages' as well as legal marriages.

All staff will be alert to the indicators that a pupil is at risk of, or has undergone, forced marriage, including, but not limited to, the pupil:

- Being absent from school – particularly where this is persistent.
- Requesting for extended leave of absence and failure to return from visits to country of origin.
- Being fearful about forthcoming school holidays.
- Being subjected to surveillance by siblings or cousins at school.
- Demonstrating a decline in behaviour, engagement, performance, exam results or punctuality.
- Being withdrawn from school by their parents.
- Being removed from a day centre when they have a physical or learning disability.
- Not being allowed to attend extracurricular activities.
- Suddenly announcing that they are engaged to a stranger, e.g. to friends or on social media.
- Having a family history of forced marriage, e.g. their older siblings have been forced to marry.
- Being prevented from going on to further or higher education.
- Showing signs of mental health disorders and behaviours, e.g. depression, self-harm, anorexia.
- Displaying a sudden decline in their educational performance, aspirations or motivation.

Staff who have any concerns regarding a pupil who may have undergone, is currently undergoing, or is at risk of forced marriage will speak to the DSL or headteacher and local safeguarding procedures will be followed – this could include referral to MASH, the police or the Forced Marriage Unit. The DSL or headteacher will ensure the pupil is spoken to privately about these concerns and further action taken as appropriate. Pupils will always be listened to and have their comments taken seriously.

It will be made clear to staff members that they should not approach the pupil's family or those with influence in the community, without the express consent of the pupil, as this will alert them to the concerns and may place the pupil in further danger.

Advice will be sought from the Forced Marriage Unit following any suspicion of forced marriage among pupils.

If a pupil is being forced to marry, or is fearful of being forced to, the school will be especially vigilant for signs of mental health disorders and self-harm. The pupil will be supported by the DSL and senior mental health lead and referrals will be made on a case-by-case basis.

Staff members will make themselves aware of how they can support victims of forced marriage in order to respond to the victims needs at an early stage, and be aware of the practical help they can offer, e.g. referral to social services and local and national support groups.

Local child safeguarding procedures will be activated following concerns regarding forced marriage – the school will use existing national and local protocols for multi-agency liaison with police and children's social care.

The school will support any victims to seek help by:

- Making them aware of their rights and choices to seek legal advice and representation.
- Recording injuries and making referrals for medical examination where necessary.
- Providing personal safety advice.
- Developing a safety plan in case they are seen, e.g. by preparing another reason for why the victim is seeking help.

The school will establish where possible whether pupils at risk of forced marriage have a dual nationality or two passports.

The school will aim to create an open environment where pupils feel comfortable and safe to discuss the problems they are facing – this means creating an environment where forced marriage is discussed openly within the curriculum and support and counselling are provided routinely.

The school will take a whole school approach towards educating on forced marriage in the school curriculum and environment – in particular, the school's RSHE curriculum will incorporate teaching about the signs of forced marriage and how to obtain help. Appropriate materials and sources of further support will be signposted to pupils. Pupils will be encouraged to access appropriate advice, information and support.

Teachers and other staff members will be educated through CPD about the issues surrounding forced marriage and the signs to look out for.

Radicalisation

For the purposes of this policy, "**radicalisation**" refers to the process by which a person comes to support terrorism and extremist ideologies associated with terrorist groups.

For the purposes of this policy, "**extremism**" refers to the vocal or active opposition to fundamental British values, including democracy, the rule of law, individual liberty, and the

mutual respect and tolerance of different faiths and beliefs. Extremism also includes calling for the death of members of the armed forces.

For the purposes of this policy, “**terrorism**” refers to an action that endangers or causes serious violence to a person or people, serious damage to property, or seriously interferes with or disrupts an electronic system. The use or threat of these actions must be designed to influence the government or intimidate the public, and be made for the purpose of advancing a political, religious or ideological cause.

Protecting pupils from the risk of radicalisation is part of the school’s wider safeguarding duties. The school will actively assess the risk of pupils being radicalised and drawn into extremism and/or terrorism. Staff will be alert to changes in pupils’ behaviour which could indicate that they may need help or protection. Staff will use their professional judgement to identify pupils who may be susceptible to extremist ideologies and radicalisation and act appropriately, which may include contacting the DSL or making a Prevent referral. The school will work with local safeguarding arrangements as appropriate.

The school will ensure that they engage with parents and families, as they are in a key position to spot signs of radicalisation. In doing so, the school will assist and advise family members who raise concerns and provide information for support mechanisms. Any concerns over radicalisation will be discussed with the pupil’s parents, unless the school has reason to believe that the child would be placed at risk as a result.

The DSL will undertake Prevent awareness training to be able to provide advice and support to other staff on how to protect pupils against the risk of radicalisation. The DSL will hold formal training sessions with all members of staff to ensure they are aware of the risk indicators and their duties regarding preventing radicalisation.

The Prevent duty

Under section 26 of the Counter-Terrorism and Security Act 2015, all schools are subject to a duty to have “due regard to the need to prevent people from being drawn into terrorism”, known as “**the Prevent duty**”. The Prevent duty will form part of the school’s wider safeguarding obligations.

The school’s procedures for carrying out the Prevent duty, including how it will engage and implement the Channel programme, are outline in the Prevent Duty Policy.

Pupils with family members in prison

Pupils with a family member in prison will be offered pastoral support as necessary. They will receive a copy of ‘Are you a young person with a family member in prison?’ from Action for Prisoners’ Families where appropriate and allowed the opportunity to discuss questions and concerns.

Pupils required to give evidence in court

Pupils required to give evidence in criminal courts, either for crimes committed against them or crimes they have witnessed, will be offered appropriate pastoral support.

Pupils will be provided with the booklet 'Going to Court' from HMCTS where appropriate and allowed the opportunity to discuss questions and concerns.

Mental health

All staff will be made aware that mental health problems can, in some cases, be an indicator that a pupil has suffered, or is at risk of suffering, abuse, neglect or exploitation.

Staff will not attempt to make a diagnosis of mental health problems – the school will ensure this is done by a trained mental health professional. Staff will, however, be encouraged to identify pupils whose behaviour suggests they may be experiencing a mental health problem or may be at risk of developing one. Staff will also be aware of how pupils' experiences can impact on their mental health, behaviour, and education.

Staff who have a mental health concern about a pupil that is also a safeguarding concern will act in line with this policy and speak to the DSL or deputy DSLs.

The school will access a range of advice to help them identify pupils in need of additional mental health support, including working with external agencies.

In all cases of mental health difficulties, the school's Social, Emotional and Mental Health (SEMH) Policy will be consulted and adhered to at all times.

Serious violence

Through training, all staff will be made aware of the indicators which may signal a pupil is at risk from, or is involved with, serious violent crime. These indicators include, but are not limited to:

- Increased absence from school.
- A change in friendships.
- Relationships with older individuals or groups.
- A significant decline in academic performance.
- Signs of self-harm.
- A significant change in wellbeing.
- Signs of assault.
- Unexplained injuries.
- Unexplained gifts or new possessions.

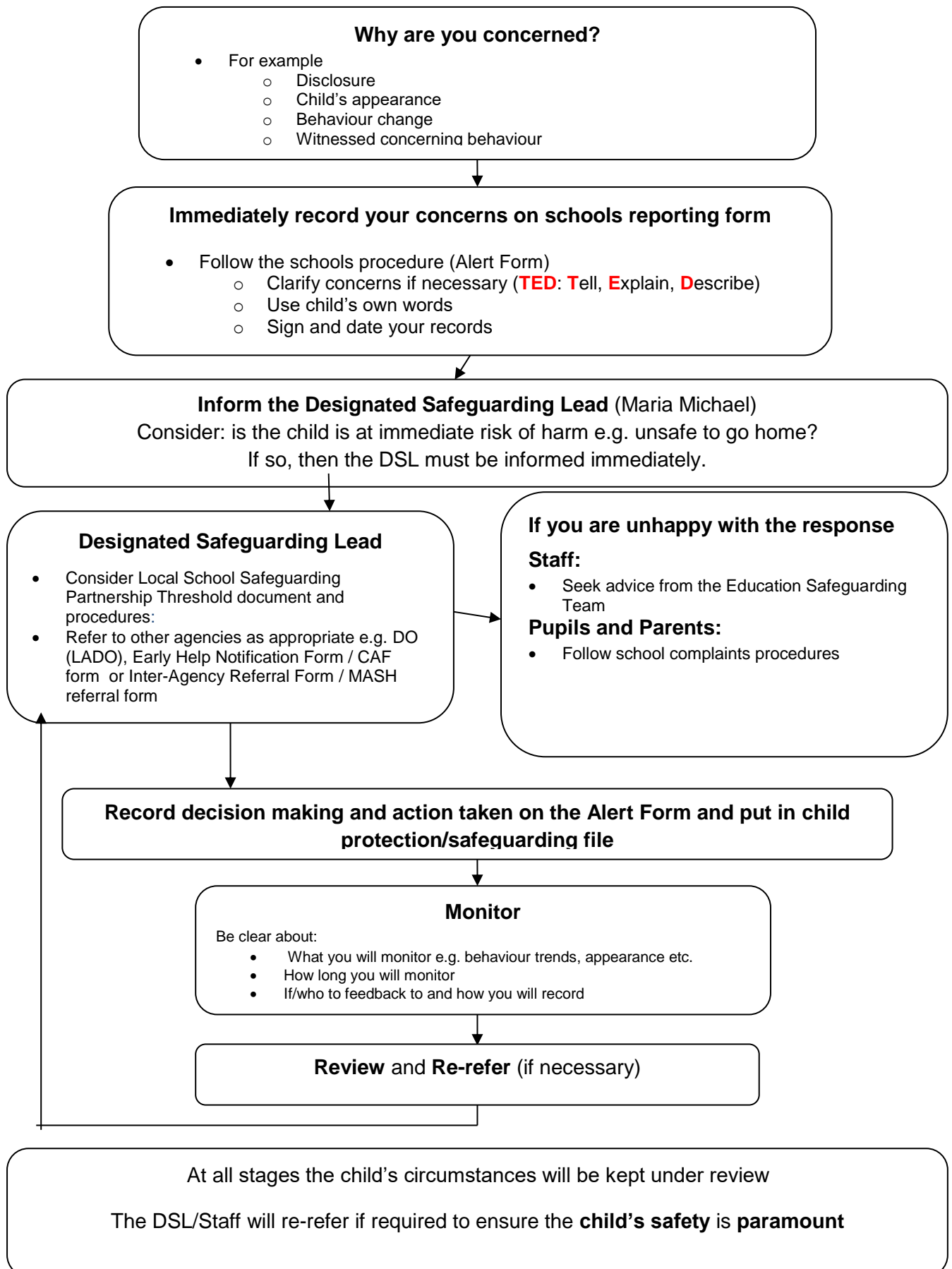
Staff will be made aware of some of the most significant risk factors that could increase a pupil's vulnerability to becoming involved in serious violence. These risk factors include, but are not limited to:

- Being male.
- Having been frequently absent from school.
- Having been permanently excluded from school.
- Having experienced child maltreatment.
- Having been involved in offending, such as theft or robbery.

Staff members who suspect a pupil may be vulnerable to, or involved in, serious violent crime will immediately report their concerns to the DSL.

The school will be aware that the Police, Crime, Sentencing and Courts Act will introduce a new duty in early 2023 on a range of specified authorities, such as the police, to share data and information, and put plans in place to prevent and reduce serious violence within their local communities. Schools will be under a separate duty to cooperate with core duty holders when asked – the school will ensure arrangements are in place to do so.

What to do if you have a Child Protection concern at Holly Park



Supervision Process

Holly Park expects all EYFS staff to take part in regular supervision sessions.

The main purposes of the supervisory process are:

- To ensure regular opportunities to discuss Safeguarding issues or concerns
- To ensure there are clear channels of communication
- To ensure that the worker is fulfilling their responsibilities to the expected standards;
- To provide support to the worker;
- To identify the professional development and learning needs of the worker.

We have agreed on the following structure for the supervision

Sessions, which will typically:

- Be offered as and when needed (an open door policy)
- More formal opportunities take place half termly which will last about 20 mins, be uninterrupted, unless by prior agreement. Be held in a mutually agreed setting, which is quiet and ensures privacy. Be booked in advance . If a supervision date has to be altered by either party, a new date and time should be fixed straight away.
- A supervision record sheet should be filled in as a record that the meeting took place
- The record should be kept by the Supervisor
- The supervision sessions **DO NOT** replace the need for staff to fill in safeguarding alert forms as required or follow the normal school procedures on reporting
- The supervision form will be given to the Headteacher at the end of the academic year and will be placed in the staff file.

SUPERVISION RECORD

Name of Supervisor

Name of Supervisee

Date of meeting

Signed by Supervisor _____

Signed by Supervisee _____

Date of meeting

Signed by Supervisor _____

Signed by Supervisee _____

Date of meeting

Signed by Supervisor _____

Signed by Supervisee _____

Date of meeting

Signed by Supervisor _____

Signed by Supervisee _____

Date of meeting

Signed by Supervisor _____

Signed by Supervisee _____

Date of meeting

Signed by Supervisor _____

Signed by Supervisee _____

Low-level Concern Reporting Form

Thank you for reporting your concerns to the safeguarding team; we are grateful to you for taking the safety and welfare of our pupils seriously. Please fill in the below form, including as much detail as you can, and return it directly to the Headteacher or DSL. Please refrain from discussing this concern with anyone other than the Headteacher or DSL until the matter has been dealt with. We ask that you keep all details, including the name staff member to whom the concern pertains, confidential.

Your details	
Name (optional)	
Role	
Date and time of completing this form	
Details of individual whom the concern is about	
Name	
Role	
Relationship to the individual reporting the concern, e.g. senior leader, colleague	
Details of concern	
Please include as much detail as possible. Think about the following: What behaviour and/or incident are you reporting? What exactly happened? Why does the behaviour and/or incident worry you? Why do you believe the behaviour and/or incident is not consistent with our Staff Code of Conduct?	
Details of any children or young people involved	
Name(s)	
Do you believe there is a risk of harm to the above children or young people, either now or in the future, as a result of the individual's behaviour? Explain your answer.	
Next steps	

What would you like to see happen in response to your concern?		
Are you willing to meet with the Headteacher and DSL to discuss your concern? Please circle as appropriate.	Yes	No
Please state any other information that you believe is relevant to the processing of this concern.		
Signature		
For use by Headteacher or DSL upon receipt of concern		
Date and time concern received		
Signature of DSL or Headteacher		
Actions to be taken (e.g. no action, investigation, reclassification as allegation meeting the harms threshold.)		



HOLLY PARK
PRIMARY SCHOOL

DSL Duty Days During School Time

Monday: Emily Sampson

Tuesday: Maria Michael

Wednesday: Ann Pelham

Thursday: Diana Kelly

Friday: Eve Mehtar

On Duty DSL Cover for HPS Breakfast Clubs and EYFS After School Club

Breakfast Clubs (7.45am – 8.45am)

Maria Michael

Andrea Needham

EYFS After School Club (3.30pm – 6pm)

Monday – Maria Michael

Tuesday – Eve Mehtar

Wednesday – Diana Kelly

Thursday – Emily Sampson

Friday - Ann Pelham

*If for any reason the on duty DSL is not available then please contact any of the other 7 DSLs