

2019-2020 Overview



Below is what our PTA achieved last academic year against all odds

Winter Fair
2019



THE
Big
HOLLY PARK
APPEAL

Second hand
uniform shop

Disco

Clothes
recycling

**£34,000
raised!**

Mother's
Day shop

Bag2School



Junior
Quiz

School
lottery

Cake
sales

Ice lolly sales

Our Y6
running hero

Class photos
2020



Our new playground

We may be one of the luckiest schools around to have had the luxury to come back to a new playground. Thanks to all Holly Parkers big and small, their families, the community and the incredible team of people making it all possible.



PTA
Friends of Holly Park





Our PTA for 2020-2021



The PTA for this academic year 2020/2021, welcomes:
Julie Adlington as our new secretary and **Marilena Skavara** as
our new co-chair.

Our official committee members are:
Nathalie Hughes and Marilena Skavara as joint Chairs.
Otto Balsiger as Treasurer.
Julie Adlington as Secretary.
Amanda Glaser as Fundraising Partnership Co-Ordinator.
Poppy as our Mascot!

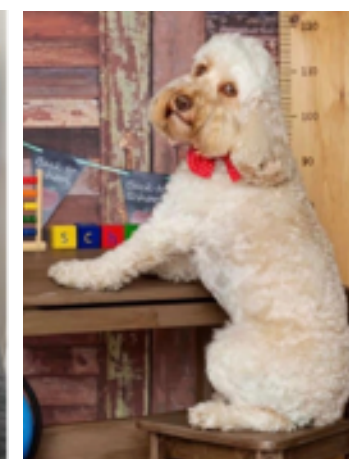
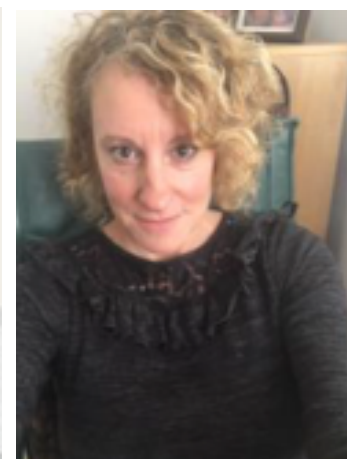
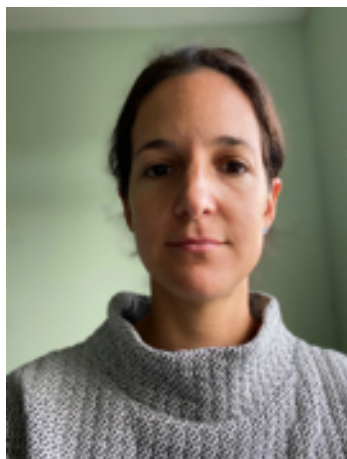
Thank you ever so much for all your support this first month of
school.

We have already raised just above **£650** with: the second hand
uniform shop £200 the ice lolly sales £148, the bag2schools
£168 and the lottery £163.

The PTA is hoping to hold a few events during this term in a new
innovative and safe way, the cake sales for Y6/5&4.

The junior Quiz (Quizzes this year)
And a few seasonal tables leading up to Christmas (Hallowe'en,
Guy Fawkes Day, etc....)

AND EVER SO SOON THE RECEPTION YEAR ZOOM MEET!



Autumn term events

(Weather and safety guidelines permitting)



Following the government guidelines the PTA is adapting and offering a series of events this term in a virtual form or simply in a rigorous social distancing manner.

Macmillan coffee morning

PTA AGM zoom meeting

Year 6 Cake Sale.

Reception Year family fun

Junior Quizzes

Year 5 Cake sale

Year 4 Cake sale

Winter fun stalls scattered around the neighbourhood on various dates for the whole of December (from mince pies to arts and crafts, gifts and Santa zoom visits)

Friday 25th September

Wednesday 30th September

Friday 2nd October (postponed)

Friday 9th October

Wednesday 14th October

Friday 6th November

Friday 4th December

If you want to be involved or have fundraising ideas we would love to hear from you!

How we support our school



The PTA is supporting our lovely school in small and big ways while bringing our community together and providing a positive, inclusive environment for all Holly Park families.

The PTA contributes to large projects alongside the Big Holly Park Appeal which consists of School Governors and Senior Staff members and supported by local businesses and parents. The new playground came to fruition by this wonderful synergy.

We have also funded medium projects like the reading sheds and story corner, the re-carpeting of the stage in the main hall, the renovation of the grass areas and the infant playground equipment.

The PTA is also helping in smaller ongoing ways like paying for magazine subscriptions, equipment for our forest school and realising teachers' wish lists for items which improve our children's learning experience in the classrooms.

This year we are hoping to raise funds to replace the wooden houses and the pirate ship in the main playground! We hope you can join us in our fundraising efforts, and be part of a very nice and fun team!