

HOLLY PARK NEWSLETTER

ISSUE 21

Friday 6th March 2020

www.hollyparkschool.co.uk

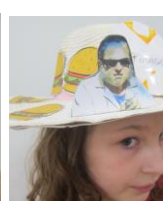
The Holly Park Book Swap

The Holly park annual book swap was a great success as usual. Children enjoyed browsing the books and choosing one to take home. This is a great Eco event as we are reusing and recycling our books. A great way to get a new book to read at no cost.



World Book Day

World Book day was a huge success with so many children wearing absolutely amazing hats. I must say a huge thank you to parents who have really engaged with this idea and I can see have spent lots of time with the children being exceedingly creative and imaginative. There are lots more pictures on the website. Even Poppy engaged with the day!!



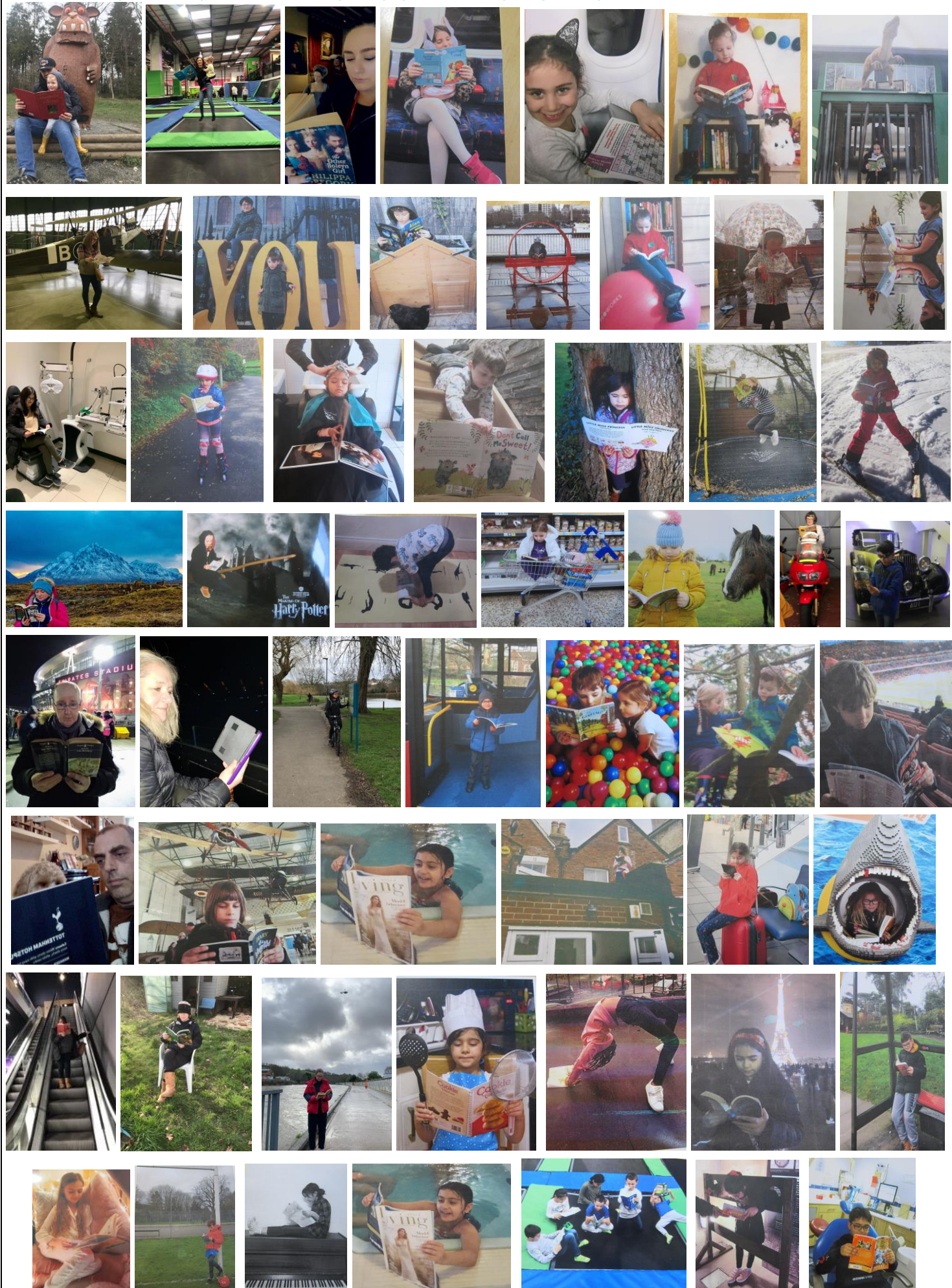
Instrumental Concert

The instrumental concert was a lovely event with solos, duets, trios and both small and larger ensembles. So many instruments played – recorders, guitars, drums, flutes, clarinets, saxophone, trumpets, violins and cellos. We heard short simple pieces from new beginners to more complex longer pieces from more accomplished players.



Half Term Extreme Reading Challenge

We had hundreds of photographs of staff and children reading in very exciting and unusual places. Here are some of the pictures. Well done and thank you to everyone who sent in a photograph – some very imaginative places! There are more on the website.



Diary Dates

Monday 9th March	First Aid for children sessions begin
Tuesday 10th March	Poplar Class assembly 9am
Tuesday 10th March	Barnet dance festival (Y6)
Thursday 12th March	Y4 trip to The Tate Gallery
Thursday 12th March	RAH music practice
Friday 13th March	Holly park Maths Day
Friday 13th March	Y3 cake sale
Monday 16th March	Times released for parent evening
Monday 16th March	First Aid for children sessions
Tuesday 17th March	KS1 Book Look 3.45pm – 5.45pm
Wednesday 18th March	PTA Mothers' Day Sale
Thursday 19th March	KS2 Book Look 3.45pm – 5.45pm
Friday 27th March	PTA Spring Fair
Saturday 28th March	PTA car Boot Sale
Monday 30th March	Holly Park Well-being Week
Monday 30th March	Wheel to School Week
Tuesday 31st March	Elm Class assembly
Tuesday 31st March	Y5 to the National Gallery
Wednesday 1st April	KS1 Parent Evening 2.30-3.30pm
Thursday 2nd April	Easter Lunch
Thursday 2nd April	KS1 parent Evening 3.45pm – 8pm
Thursday 2nd April	KS2 Parent Evening 2.30pm – 8pm
Friday 3rd April	End of term at 1.30pm

Right's Respecting Schools

This week's right is: *Article 15*: Children can join or set up groups or organisations, and they can meet with others, as long as this does not harm other people.

Last week's quiz question was: *Do all children in the world have a right to health, education and protection?*

The answer is: YES

This week's quiz question is: *Children have a right to information that is important for their health and well-being. Yes or no?*



Coronavirus

Further to the communications I have sent previously, I would like to inform you that the Department for Education has launched a new helpline to answer questions about COVID-19 related to education. Phone: 0800 046 8687. Email: DfE.coronavirushelpline@education.gov.uk

Opening hours: 8am to 6pm (Monday to Friday)

I have spoken to children in assembly this week about the coronavirus and encouraging them to wash their hands frequently and often whilst singing the tune of 'Happy Birthday' in their head. We also spoke about using tissues for coughs and colds and binning it when used. I would also like to advise you that the school supply of anti-bacterial hand gel is plentiful at the moment. At the present time we will continue to plan and do trips into central London as usual on public transport unless we are informed by Barnet of anything different. We will of course keep you advised. We have also been advised that current Department for Education advice is that no school should close in response to a suspected or confirmed COVID-19 case unless advised by Public Health England.

Attendance and Punctuality Winners for the Week

Winners of Punctuality parrot		Y6 Beech
Winners of Attendance Alligator		Y5 Maple

Housepoints

Dragon	285	points
Griffin	259	points
Unicorn	220	points
Hydra	192	points
Phoenix	172	points

Well Done **Dragon**

Music News

Ensemble sessions are complete for the term.

CHAMBER CHOIR: remaining sessions: 18th March.

YEAR 3&4 BARNABAS CHOIR: 11th March.

Infant Choir (Tuesday lunchtimes) remaining sessions:

YEAR 2 INFANT CHOIR 10th March.

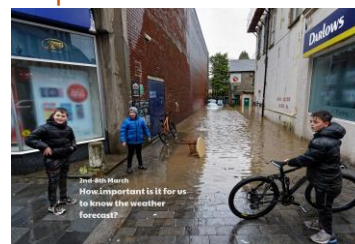
YEAR 1 INFANT CHOIR 17th March.

Year 6 Barnabas Choir will be performing at **The Royal Albert Hall** on April 30th. There will be a **cluster rehearsal** at Holly Park during school-time this Thursday (12th March) with a number of other schools that will be performing alongside us at the concert.

Our News Discussion Point Of The Week

How important is it for us to know the weather forecast?

A supercomputer is to be developed to support the Met Office in a huge project to improve weather forecasting. The new technology is to be funded by a £1.2 billion investment from the government and will be managed by the Met Office. It is expected the computer will be the most powerful forecasting system in the world and will be able to offer more precise weather and flood updates.



This Week's Related Vocabulary

Accurate – correct to a very detailed level.

Exceptionally – unusual and unlikely to happen frequently.

Extreme – reaching a high or the highest degree; very great.

Investment – the action or process of investing money for profit.

Precise – exact and accurate.





The Holly Park Appeal

Dear parents,

For several years now I have been concerned about 180 junior children lining up so close together in the playground and more importantly going through one small entrance into the old junior building to hang their coats up in a small space before going into their classrooms. This is a less than ideal situation that happens 5 times every school day.

The solution is quite straight forward:

- Extend the playground down the side of the junior building and into the car park enabling the existing external door in current Mulberry Class to be used as an access point
- Knock through another external door from the old Hazel classroom into the existing car park creating a second access point

The benefits of this work will mean much less crowding in cloakrooms, safer entry and exits during the day, less crowding of parents and children at the start and end of the school day.

The added benefit will mean a larger place space for all of the junior children.

The work has never been undertaken because there is absolutely no way that our annual school budget could run to doing this.

Governors and staff have discussed how as a school we can have a co-ordinated approach to fund raising so that we can all work together to keep making improvements to the fabric of our school. A group has been formed consisting of staff, governors and PTA members called the 'Holly Park Appeals Committee.' The group is being led by a parent –and governor John Harte who is the governor with responsibility for Income Realisation.

The Holly Park Appeals Committee is raising funds for improvements to the school facilities to be carried out in summer 2020. Aimed at creating a **happier, healthier** and **safer** Holly Park, the works will include:

- Removing the car park running alongside the side of the junior school building and opening this space to children, creating a larger playground space
- Installing new entrances/exits from the junior building opening onto this newly-created playground space, reducing congestion inside and improving emergency exit provision

The estimated cost of the works is £40,000

Today the children had an assembly which in effect launched the Big Holly Park Appeal and explained to them what it was all about.

We would like the children to launch the fundraising by entering a playground design competition

Please look out in the book bags today for the competition design sheet.

Please also look out for a letter today in the book bags and by e-mail for more information about the appeal and what you can do to help and support us.

I really hope you will feel that this is an excellent project which will make the school happier, healthier and safer for our junior pupils now and for those who will be juniors of the future!

Headteacher

If you would like to get in touch about supporting the Big Holly Park Appeal, or have questions about the campaign, please contact John Harte on hollyparkspecialfund@gmail.com or 07812 049209.